



COVID-19 Guide

Adjustments to Transplant Program and OPO Evaluation Metrics

The Scientific Registry of Transplant Recipients (SRTR), under contract from the Health Resources and Services Administration (HRSA), is charged with evaluating the performance of the nation's transplant system through publication of semi-annual transplant program-specific reports (PSRs) and organ procurement organization (OPO)-specific reports (OSRs). These reports contain performance metrics covering various time periods. For OPOs, these metrics include deceased donor organ yield. For transplant programs, they include pre-transplant mortality rates (formerly called waitlist mortality rates), transplant rates, organ offer acceptance rates, patient mortality after listing, and 1-month, 90-day, 1-year, 1-year conditional on 90-day, and 3-year posttransplant outcomes including graft survival and patient survival.

In response to the current global pandemic, SRTR modified the evaluation metrics for transplant programs and OPOs for the reports released in January 2021, July 2021, January 2022, July 2022, January 2023, July 2023, January 2024, July 2024 and January 2025. These reports made adjustments to transplant program and OPO performance metrics so that data during the time around the declaration of a national public health emergency on March 13, 2020, were not included in the metrics.

Modifications for the July 2025 reporting cycle were considered at the Analytic Methods Subcommittee of the SRTR Review Committee (SRC) at its meeting on March 24, 2021, and the full SRC meetings April 27, 2021 and on January 11, 2022. Both the Analytic Methods Subcommittee and the full SRC recommended an ongoing carve out of the first quarter of the pandemic (March 13, 2020 through June 12, 2020) from adjusted performance metrics, as detailed below. These recommendations were reviewed by HRSA's Division of Transplantation, which oversees SRTR. HRSA approved these recommendations, which SRTR will implement for the July 2025 reporting cycle. These changes will remain in force beyond the July 2025 reporting cycle, unless otherwise amended:

Posttransplant Outcomes (including 1-month, 90-day, 1-year, 1-year conditional on 90-day, and 3-year graft and patient survival): Evaluation cohorts will exclude transplants performed between March 13, 2020 and June 12, 2020, inclusive of March 13 and June 12. Patients given transplants before March 13, 2020 will have follow-up censored on March 12, 2020. Patients given transplants after June 12, 2020 will resume normal follow-up. Follow-up will not resume for patients given transplants before March 13, 2020 who are alive with function on June 12, 2020; however, this may be reconsidered as SRTR continues to explore moving to a period-prevalent methodology:

1-month, 90-day, 1-year & 1-year conditional on 90-day Patient and Graft Survival Evaluations: Transplants 1/1/2022-6/30/2024, follow-up through 12/31/2024.

3-year Patient and Graft Survival Evaluations: Transplants 7/1/2019-3/12/2020, follow-up through 3/12/2020. Transplants 6/13/2020-12/31/2021; follow-up through 12/31/2024.

Pre-Transplant Mortality Rate (formerly called Waitlist Mortality Rate): These evaluations are based on normal reporting cohorts.

Days after listing (and before transplant) between 1/1/2023 and 12/31/2024.



COVID-19 Guide

Transplant Rate: These evaluations are based on normal reporting cohorts.

Candidates on the waitlist 1/1/2023-12/31/2024.

Overall Rate of Mortality After Listing: These evaluations are based on normal reporting cohorts.

Evaluation period: 1/1/2023-12/31/2024.

Offer Acceptance Rate: These evaluations are based on normal reporting cohorts.

Offers received 1/1/2024-12/31/2024.

These decisions will apply to the evaluations released in the SRTR's semi-annual program-specific reports scheduled for release on July 8, 2025. These changes have been communicated to the leadership of the Organ Procurement and Transplantation Network's (OPTN) Membership and Professional Standards Committee (MSPC). These decisions will then be re-evaluated as more information becomes available in preparation for the release scheduled for January 2026.

As with the January 2025 reports, SRTR will continue to report descriptive data beyond March 12, 2020, e.g., waitlist counts, transplant counts, recipient characteristics, donor counts, donor characteristics, etc., but will alter data for performance evaluation metrics as described above.



User Guide

This report contains a wide range of useful information about the lung transplant program at UF Health Shands Hospital. The report has three main sections:

- A. Program Summary
- B. Waiting List Information
- C. Transplant Information

The Program Summary is a one-page summary highlighting characteristics of the program, including the number of candidates on the waiting list, the number of transplants performed at the program, the number of patients being cared for by the program, and patient outcomes, including outcomes while on the waiting list (the transplant rate and the death rate while on the waiting list) and outcomes after transplant (patient and graft survival probabilities). If the program performed transplants in both adults and children, survival probabilities for adults and children (pediatrics) are provided separately. For each of the outcomes measures presented, a comparison is provided showing what would be expected at this program if it were performing as similar programs around the country perform when treating similar patients. More details regarding these outcome measures are provided in Sections B and C of the report.

The Waiting List Information section contains more detailed information on how many candidates are on the waiting list at the program, the types of candidates on the waiting list, how long candidates typically have to wait for a transplant at this program, how frequently candidates successfully receive a transplant, and how often candidates on the waiting list die before receiving a transplant.

Table B1 shows the activity on this program's waiting list during two recent 1-year periods and provides comparisons to all programs within this program's OPTN region (see <http://optn.transplant.hrsa.gov/members/regions.asp> for information on OPTN regions) and the nation as a whole. Tables B2 and B3 describe the candidates on the waiting list at this program, with comparisons to candidates waiting in the same donor service area (OPO/DSA) the OPTN region, and the nation as a whole.

Table B4 shows how many candidates were removed from the waiting list because they received a transplant. The program's transplant rate is calculated as the number of candidates who received a transplant divided by the person-years observed at the program (person-years is a combination of how many candidates were on the waiting list along with how long each candidate was followed since some candidates are not on the waiting list for the entire year). The transplant rate and comparisons to what would be expected at this program are presented in Figures B1 and B2. Figure B1 shows the transplant rate compared to what was expected at this program. The expected transplant rate is an estimate of what we would expect at this program if it were performing transplants at rates similar to other programs in the US with similar candidates on their waiting lists. The expected rate is only an estimate, and is made with a certain level of uncertainty. This uncertainty is shown in Figure B2. Figure B2 displays the ratio of the observed to the expected transplant rate. A ratio of 1 indicates that the observed transplant rate was equal to the expected transplant rate, while a ratio less than 1 indicates the observed rate was lower than expected rate and a ratio greater than 1 indicates the observed rate was higher than the expected rate. However, the level of uncertainty must be considered when interpreting these numbers. The 95% interval is also shown on Figure B2. This interval provides a range within which the true ratio of observed to expected transplant rates is likely to be. If this



User Guide

confidence interval includes (crosses) 1.0, then we cannot say that this program's observed transplant rate is different from what would be expected. The observed deceased donor transplant rate at this program was 598.1 per 100 person-years. Transplant rates are also provided for adult and pediatric patients separately along with comparisons to adult and pediatric rates in the DSA, the OPTN region, and the nation. Please refer to the PSR Technical Methods documentation available at <http://www.srtr.org> for more detail regarding how expected rates are calculated.

The pre-transplant mortality rate (previously called the waiting list mortality rate) for candidates on the waiting list is presented in Table B5 and Figures B4-B6. These data are presented in the same way as the transplant rate data in the previous section. The intent of this table and figures is to describe risk of death once candidates are listed rather than while they are listed, but before they are transplanted. Therefore, time at risk and deaths after removal from the waiting list for reasons other than transplant, transfer to another transplant program, or recovery (no longer needing a transplant), and before any subsequent transplant, are included. As with transplant rates, mortality rates should be interpreted carefully taking into consideration the interval displayed in Figure B5. For a complete description of how observed and expected mortality rates are calculated, please refer to the technical documentation available at <http://www.srtr.org>.

Survival from listing is presented in Table B6 and Figures B7-B9. These data are presented in the same way as the pre-transplant mortality rate data in the previous section. The intent of this table and figures is to describe risk of death once candidates are listed rather than while they are listed, including after a transplant. As with transplant rates, mortality rates should be interpreted carefully taking into consideration the interval displayed in Figure B8. For a complete description of how observed and expected mortality rates are calculated, please refer to the technical documentation available at <http://www.srtr.org>.

Table B7 presents information on what happens to candidates on the waiting list by three different time points after listing: 6 months, 12 months, and 18 months. The table displays percentages of candidates who have died, been removed from the waiting list, been transplanted, or been transferred or lost-to-follow-up. Tables B8 and B9 provide more detail regarding how many candidates have received a deceased donor transplant by certain time points during the first 3 years after being put on the transplant waiting list. Each row of Tables B8 and B9 presents the percent of candidates who received a deceased donor transplant by each time point. Table B10 presents data on the time it took for different percentages of patients to be transplanted for candidates added to the list between 01/01/2019 and 06/30/2024. The time it took for 5% (the 5th percentile) of patients to receive a transplant at this program was 0.1 months. If "Not Observed" is displayed in the table, then too few candidates received transplants before 12/31/2024 to calculate a particular percentile of transplant times.

Table B11 contains a summary of the offer acceptance practices of the program. The offer acceptance ratio indicates whether the program is more or less likely to accept offers than the average program. If the offer acceptance ratio is greater than 1.0, then the program tends to accept more offers than average; if the offer acceptance ratio is less than 1.0, then the program tends to accept fewer offers than average. Figure B10 shows the distribution of program offer acceptance rates as well as the offer acceptance rate for this program. Figures B11 - B15 similarly show offer acceptance rates for subsets of offers.



User Guide

The Transplant Information section begins with descriptions of transplant recipients in Tables C1 and C2. Data on recipients of deceased donor transplants are presented (Tables C1D and C2D); if applicable, data on recipients of living donor transplants are presented separately (Tables C1L and C2L). Comparisons to the region and the nation as a whole are provided. A description of the deceased donors used at this program is provided in Table C3D, along with characteristics of living donors in Table C3L, if applicable. Finally, information on the transplant procedure for deceased and living donor transplants is presented in Tables C4D and C4L, respectively.

Starting with Table C5, transplant outcomes are presented along with comparisons to what would be expected at this program and what happened in the nation as a whole. Tables C5-C14 (tables C5-C10 for Pancreas) present information on graft survival (survival of the transplanted organ), with data presented separately for adult and pediatric recipients. Patients are followed from the time of transplant until either failure of the transplanted organ or death, whichever comes first. Please refer to the technical methods for more information on these calculations (<http://www.srtr.org>).

While Tables C5-C14 present data on graft survival, Tables C15-C20 (tables C11-C20 for Pancreas) present information on patient survival. For these tables, patients are followed from the time of transplant until death, regardless of whether the transplant is functioning or the patient required another transplant to survive.

Tables C21 and C22 summarize the multiorgan transplant outcomes at this program. The summary statistics in these tables are descriptive and are not risk-adjusted for different donor and candidate characteristics.

Additional information regarding the technical methods and the risk adjustment models used to estimate expected event rates is available on the SRTR website at <http://www.srtr.org>. We welcome and encourage feedback on these reports. Please feel free to share feedback with the SRTR at the following e-mail: srtr@srtr.org.



Table of Contents

Section	Page
COVID-19 Guide	i
User Guide	iii
A. Program Summary	
Program Summary	1
B. Waiting List Information	
Waiting list activity	2
Demographic characteristics of waiting list candidates	3
Medical characteristics of waiting list candidates	4
Deceased donor transplant rates	5
Pre-transplant mortality rates (formerly called Waiting list mortality rates)	6
Patient survival from listing	7
Waiting list candidate status after listing	8
Percent of candidates with deceased donor transplants: demographic characteristics	9
Percent of candidates with deceased donor transplants: medical characteristics	10
Time to transplant for waiting list candidates	11
Offer acceptance practices	12
C. Transplant Information	
Deceased donor transplant recipient demographic characteristics	14
Deceased donor transplant recipient medical characteristics	15
Deceased donor characteristics	16
Deceased donor transplant characteristics	17
Deceased donor graft survival	18
Deceased donor patient survival	28
Multi-organ transplant graft survival	34
Multi-organ transplant patient survival	34



A. Program Summary

Figure A1. Waiting list and transplant activity

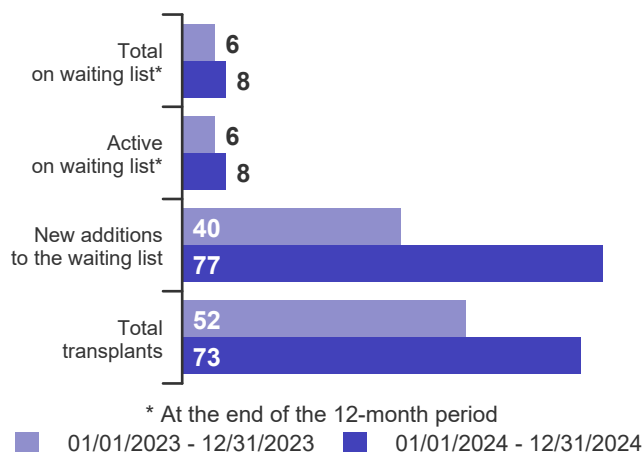


Table A1. Census of transplant recipients

Recipients	01/01/2023-12/31/2023	01/01/2024-12/31/2024
Transplanted at this center	52	73
Followed by this center*	417	424
...transplanted at this program	407	414
...transplanted elsewhere	10	10

* Recipients followed are transplant recipients for whom the center has submitted a post-transplant follow-up form for a transplant that took place before the 12-month interval for each column.

Figure A2. Transplant rates
01/01/2023 - 12/31/2024

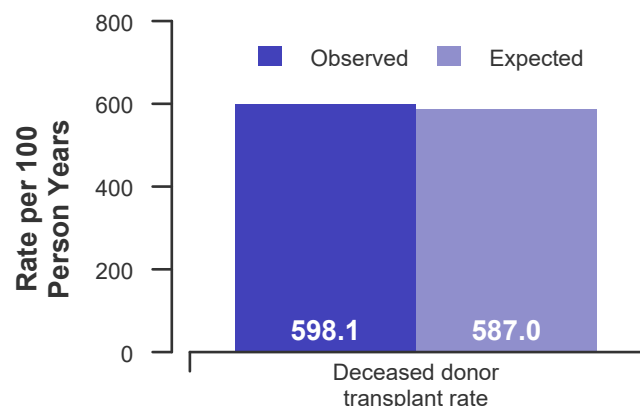


Figure A3. Pre-transplant mortality rates
01/01/2023 - 12/31/2024

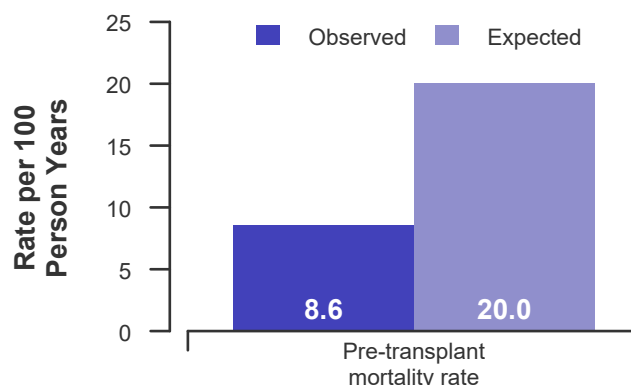


Figure A4. First-year adult graft and patient survival: 01/01/2022 - 06/30/2024

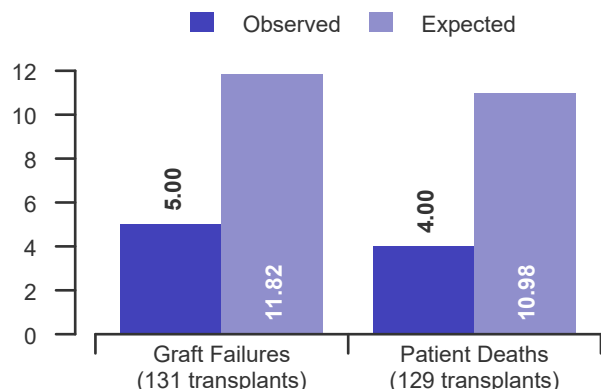
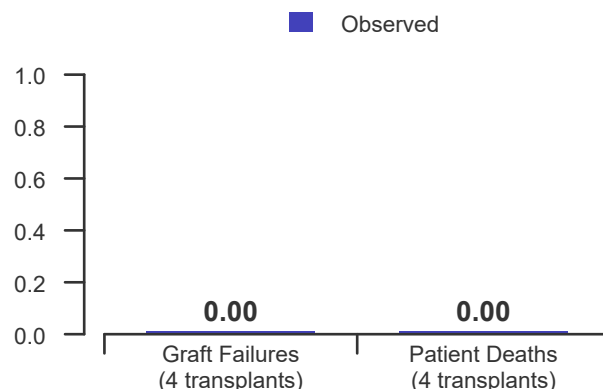


Figure A5. First-year pediatric graft and patient survival: 01/01/2022 - 06/30/2024





B. Waiting List Information

Table B1. Waiting list activity summary: 01/01/2023 - 12/31/2024

Waiting List Registrations	Counts for this center		Activity for 01/01/2024 to 12/31/2024 as percent of registrants on waiting list on 01/01/2024		
	01/01/2023- 12/31/2023	01/01/2024- 12/31/2024	This Center (%)	OPTN Region (%)	U.S. (%)
On waiting list at start	20	6	100.0	100.0	100.0
Additions					
New listings at this center	40	77	1,283.3	500.0	405.9
Removals					
Transferred to another center	0	0	0.0	1.3	1.6
Received living donor transplant*	0	0	0.0	0.0	0.0
Received deceased donor transplant*	52	73	1,216.7	426.3	363.8
Died	1	0	0.0	14.5	10.1
Transplanted at another center	0	0	0.0	1.3	1.6
Deteriorated	1	1	16.7	25.0	9.6
Recovered	0	0	0.0	2.6	2.6
Other reasons	0	1	16.7	25.0	14.9
On waiting list at end of period	6	8	133.3	103.9	101.5

* These patients were removed from waiting list with removal code indicating transplant; this may not equal the number of transplants performed at this center during the specified period.



B. Waiting List Information

Table B2. Demographic characteristics of waiting list candidates**Candidates registered on the waiting list between 01/01/2024 and 12/31/2024**

Demographic Characteristic	New Waiting List Registrations 01/01/2024 to 12/31/2024 (%)			All Waiting List Registrations on 12/31/2024 (%)		
	This Center (N=77)	OPTN Region (N=380)	U.S. (N=3,726)	This Center (N=8)	OPTN Region (N=79)	U.S. (N=932)
All (%)	100.0	100.0	100.0	100.0	100.0	100.0
Ethnicity/Race (%)*						
White	63.6	59.2	65.8	62.5	64.6	62.0
African-American	13.0	12.9	11.1	0.0	11.4	14.9
Hispanic/Latino	18.2	22.4	15.0	37.5	16.5	15.5
Asian	0.0	3.2	3.7	0.0	6.3	3.9
Other	0.0	0.5	1.2	0.0	0.0	1.7
Unknown	5.2	1.8	3.3	0.0	1.3	2.0
Age (%)						
<2 years	0.0	0.0	0.1	0.0	0.0	0.1
2-11 years	3.9	0.8	0.4	25.0	2.5	1.3
12-17 years	1.3	0.3	0.6	0.0	0.0	0.5
18-34 years	3.9	5.3	4.5	0.0	10.1	4.8
35-49 years	6.5	11.6	11.2	0.0	6.3	9.9
50-64 years	41.6	44.7	43.2	25.0	43.0	40.1
65-69 years	26.0	22.1	24.6	0.0	17.7	26.9
70+ years	16.9	15.3	15.5	50.0	20.3	16.3
Gender (%)						
Male	63.6	56.6	59.2	37.5	43.0	49.1
Female	36.4	43.4	40.8	62.5	57.0	50.9

* Race and ethnicity are reported together as a single data element, reflecting their data collection (either race or ethnicity is required, but not both). Patients formerly coded as white and Hispanic are coded as Hispanic. Race and ethnicity sum to 100%.



B. Waiting List Information

Table B3. Medical characteristics of waiting list candidates

Candidates registered on the waiting list between 01/01/2024 and 12/31/2024

Medical Characteristic	New Waiting List Registrations 01/01/2024 to 12/31/2024 (%)			All Waiting List Registrations on 12/31/2024 (%)		
	This Center (N=77)	OPTN Region (N=380)	U.S. (N=3,726)	This Center (N=8)	OPTN Region (N=79)	U.S. (N=932)
All (%)	100.0	100.0	100.0	100.0	100.0	100.0
Blood Type (%)						
O	53.2	51.1	47.6	75.0	53.2	61.7
A	39.0	35.0	37.6	12.5	34.2	27.4
B	3.9	10.5	11.2	12.5	12.7	10.0
AB	3.9	3.4	3.5	0.0	0.0	1.0
Unknown	0.0	0.0	0.0	0.0	0.0	0.0
Previous Transplant (%)						
Yes	0.0	1.6	4.0	0.0	1.3	4.7
No	100.0	98.4	96.0	100.0	98.7	95.3
Unknown	0.0	0.0	0.0	0.0	0.0	0.0
Primary Disease (%)						
Idiopathic Pulmonary Arterial Hypertension	2.6	4.2	5.1	12.5	8.9	8.3
Cystic Fibrosis	3.9	2.9	1.4	12.5	6.3	1.5
Idiopathic Pulmonary Fibrosis	63.6	64.5	63.6	37.5	38.0	53.6
Emphysema/COPD	15.6	18.4	19.9	25.0	36.7	27.6
Other	14.3	10.0	10.0	12.5	10.1	9.0
Missing	0.0	0.0	0.0	0.0	0.0	0.0



B. Waiting List Information

Table B4D. Deceased donor transplant rates: 01/01/2023 - 12/31/2024

Waiting List Registrations	This Center	OPO/DSA	Region	U.S.
All Candidates				
Count on waiting list at start*	20	38	57	974
Person Years**	20.9	57.0	98.4	1,920.4
Removals for Transplant	125	259	510	6,482
Adult (18+) Candidates				
Count on waiting list at start*	18	36	55	947
Person Years**	18.0	54.1	95.5	1,876.8
Removals for transplant	122	256	505	6,421
Pediatric (<18) Candidates				
Count on waiting list at start*	2	2	2	27
Person Years**	2.9	2.9	3.0	43.5
Removals for transplant	3	3	5	61

* Counts in this table may be lower than similar counts in other waiting list tables, such as Table B1. A small percentage (~1%) of patients are found to have died or been transplanted before being removed from the waiting list, so these patients are excluded if the event occurs prior to the start of the study period. Inactive time on the waiting list is included in the calculations for this table.

** Person years are calculated as days (converted to fractional years). The number of days from January 1 or from the date of first wait listing until death, transplant, removal from the waiting list or December 31.

Figure B1D. Observed and expected deceased donor transplant rates: 01/01/2023 - 12/31/2024

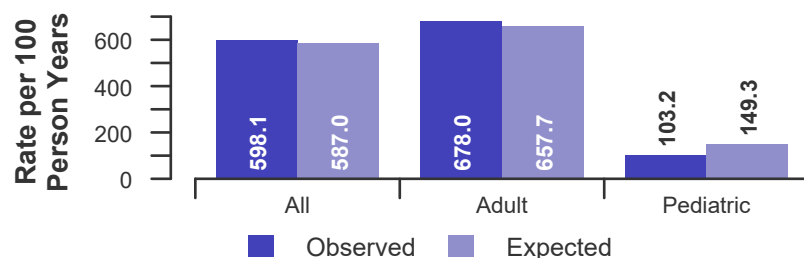


Figure B2D. Deceased donor transplant rate ratio estimate

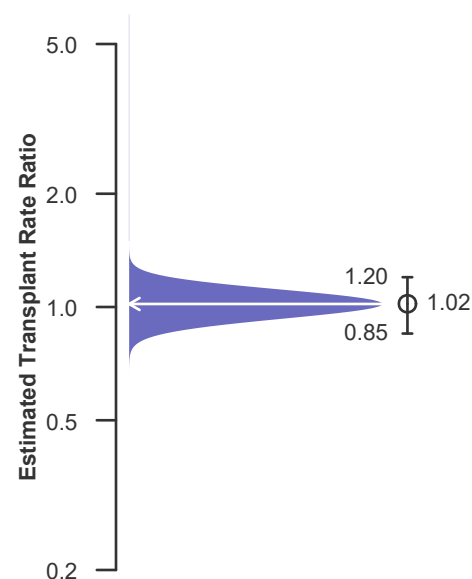
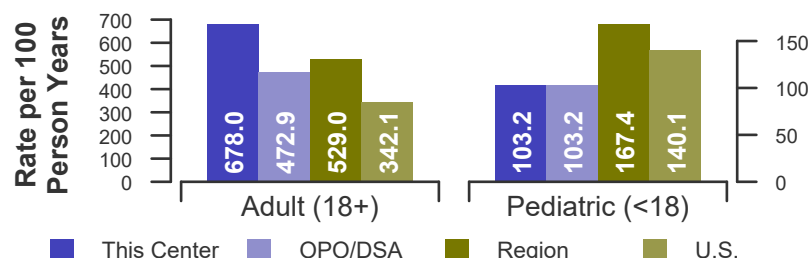


Figure B3D. Observed adult (18+) and pediatric (<18) deceased donor transplant rates: 01/01/2023 - 12/31/2024





B. Waiting List Information

Table B5. Pre-transplant mortality rates: 01/01/2023 - 12/31/2024

Waiting List Registrations	This Center	OPO/DSA	Region	U.S.
All Candidates				
Count on waiting list at start*	20	38	57	974
Person Years**	23.3	69.2	114.7	2,138.1
Number of deaths	2	10	18	299
Adult (18+) Candidates				
Count on waiting list at start*	18	36	55	947
Person Years**	19.7	65.6	111.0	2,087.2
Number of deaths	1	9	17	293
Pediatric (<18) Candidates				
Count on waiting list at start*	2	2	2	27
Person Years**	3.6	3.6	3.7	50.9
Number of deaths	1	1	1	6

* Counts in this table may be lower than similar counts in other waiting list tables, such as Table B1. A small percentage (~1%) of patients are found to have died or been transplanted before being removed from the waiting list, so these patients are excluded if the event occurs prior to the start of the study period. Inactive time on the waiting list is included in the calculations for this table.

** Person years are calculated as days (converted to fractional years). The number of days from January 1 or from the date of first wait listing until death, transplant, 60 days after recovery, transfer or December 31.

Figure B4. Observed and expected pre-transplant mortality rates: 01/01/2023 - 12/31/2024

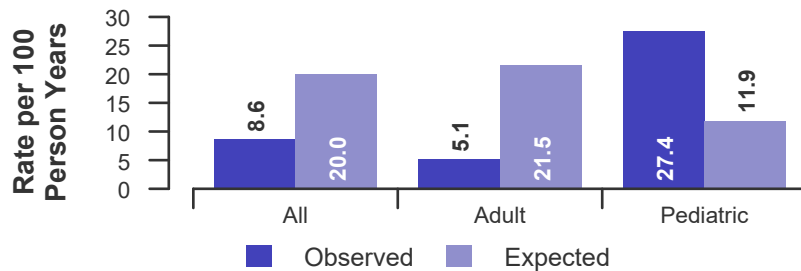


Figure B6. Observed adult (18+) and pediatric (<18) pre-transplant mortality rates: 01/01/2023 - 12/31/2024

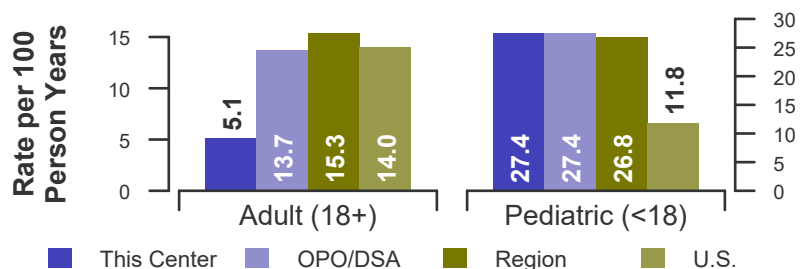
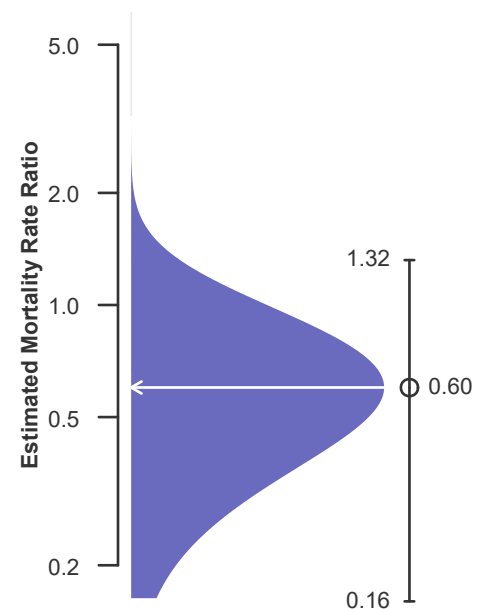


Figure B5. Pre-transplant mortality rate ratio estimate





B. Waiting List Information

Table B6. Rates of patient mortality after listing: 01/01/2023 - 12/31/2024

Waiting List Registrations	This Center	OPO/DSA	Region	U.S.
All Patients				
Count at risk during the evaluation period	459	782	1,834	18,122
Person-years*	627.3	1,025.2	2,392.7	23,311.3
Number of Deaths	36	74	221	2,135
Adult (18+) Patients				
Count at risk during the evaluation period	447	770	1,819	17,876
Person-years*	614.7	1,012.5	2,375.9	22,991.2
Number of Deaths	35	73	220	2,105
Pediatric (<18) Patients				
Count at risk during the evaluation period	12	12	15	246
Person-years*	12.7	12.7	16.8	320.1
Number of Deaths	1	1	1	30

* Person-years are calculated as days (converted to fractional years). The number of days from 01/01/2023, or from the date of first wait listing until death, reaching 5 years after listing or December 31, 2024.

** Patient mortality after listing describes the relative survival experience of patients after listing. It depends on many factors, some of which are outside of the control of the transplant program. For example, availability of organs may not be the same in every part of the country.

Figure B7. Observed and expected rates of patient mortality after listing: 01/01/2023 - 12/31/2024

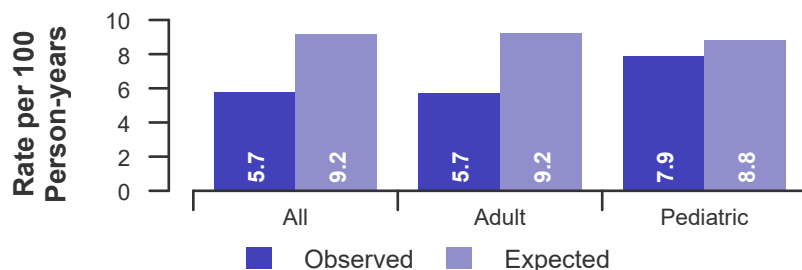


Figure B8. HR estimate of patient mortality after listing

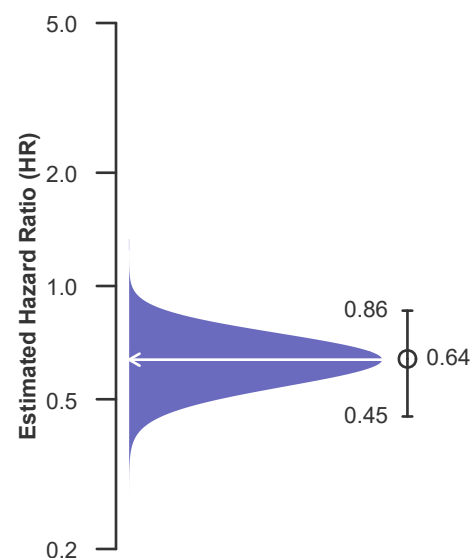
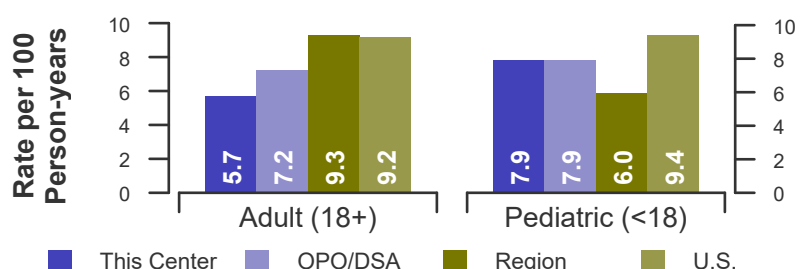


Figure B9. Observed adult (18+) and pediatric (<18) rates of patient mortality after listing: 01/01/2023 - 12/31/2024





B. Waiting List Information

Table B7. Waiting list candidate status after listing
Candidates registered on waiting list between 07/01/2022 and 06/30/2023

Waiting list status (survival status)	This Center (N=49)			U.S. (N=3,283)		
	Months Since Listing			Months Since Listing		
	6	12	18	6	12	18
Alive on waiting list (%)	16.3	2.0	2.0	15.9	6.8	3.4
Died on the waiting list without transplant (%)	0.0	0.0	0.0	2.7	3.0	3.3
Removed without transplant (%):						
Condition worsened (status unknown)	0.0	0.0	0.0	2.0	2.3	2.6
Condition improved (status unknown)	0.0	0.0	0.0	0.3	0.5	0.5
Refused transplant (status unknown)	0.0	0.0	0.0	0.1	0.2	0.2
Other	2.0	2.0	2.0	2.4	2.9	3.0
Transplant (living or deceased donor) (%):						
Functioning (alive)	81.6	93.9	57.1	71.4	73.6	43.3
Failed-Retransplanted (alive)	0.0	0.0	0.0	0.2	0.3	0.4
Failed-alive not retransplanted	0.0	0.0	0.0	0.0	0.0	0.0
Died	0.0	2.0	2.0	4.3	7.7	10.2
Status Yet Unknown*	0.0	0.0	36.7	0.5	2.4	32.6
Lost or Transferred (status unknown) (%)	0.0	0.0	0.0	0.2	0.2	0.4
TOTAL (%)	100.0	100.0	100.0	100.0	100.0	100.0
Total % known died on waiting list or after transplant	0.0	2.0	2.0	7.0	10.8	13.5
Total % known died or removed as unstable	0.0	2.0	2.0	9.0	13.1	16.1
Total % removed for transplant	81.6	95.9	95.9	76.5	84.1	86.5
Total % with known functioning transplant (alive)	81.6	93.9	57.1	71.4	73.6	43.3

* Follow-up form covering specified time period not yet completed, and possibly has not become due.



B. Waiting List Information

Table B8. Percent of candidates with deceased donor transplants: demographic characteristics
Candidates registered on the waiting list between 01/01/2019 and 12/31/2021

Characteristic	Percent transplanted at time periods since listing									
	This Center					United States				
	N	30 day	1 year	2 years	3 years	N	30 day	1 year	2 years	3 years
All	286	50.7	89.2	89.9	90.2	9,048	38.8	78.5	82.3	83.2
Ethnicity/Race*										
White	220	52.3	88.6	89.5	90.0	6,535	40.3	80.4	83.9	84.7
African-American	23	39.1	91.3	91.3	91.3	948	31.6	72.8	78.4	80.1
Hispanic/Latino	30	50.0	93.3	93.3	93.3	1,162	36.9	73.5	78.4	79.3
Asian	13	46.2	84.6	84.6	84.6	322	35.4	73.3	75.2	75.8
Other	0	--	--	--	--	81	43.2	82.7	86.4	88.9
Unknown	0	--	--	--	--	0	--	--	--	--
Age										
<2 years	0	--	--	--	--	36	13.9	58.3	61.1	61.1
2-11 years	0	--	--	--	--	35	20.0	51.4	51.4	57.1
12-17 years	2	50.0	50.0	50.0	50.0	94	43.6	71.3	72.3	72.3
18-34 years	16	50.0	87.5	87.5	93.8	609	33.3	72.1	74.9	76.4
35-49 years	45	37.8	80.0	80.0	80.0	1,055	40.0	75.5	78.3	79.5
50-64 years	118	50.8	90.7	91.5	91.5	4,078	37.7	77.6	82.3	83.4
65-69 years	52	51.9	100.0	100.0	100.0	2,068	39.4	81.8	85.6	86.2
70+ years	53	60.4	84.9	86.8	86.8	1,073	45.3	84.0	86.4	86.7
Gender										
Male	162	57.4	92.0	93.2	93.8	5,317	46.0	83.8	86.2	86.7
Female	124	41.9	85.5	85.5	85.5	3,731	28.6	70.9	76.7	78.3

* Race and ethnicity are reported together as a single data element, reflecting their data collection (either race or ethnicity is required, but not both). Patients formerly coded as white and Hispanic are coded as Hispanic. Race and ethnicity sum to 100%.



B. Waiting List Information

Table B9. Percent of candidates with deceased donor transplants: medical characteristics
Candidates registered on the waiting list between 01/01/2019 and 12/31/2021

Characteristic	N	Percent transplanted at time periods since listing					United States				
		This Center									
		30 day	1 year	2 years	3 years		30 day	1 year	2 years	3 years	
All	286	50.7	89.2	89.9	90.2	9,048	38.8	78.5	82.3	83.2	
Blood Type											
O	128	55.5	92.2	93.0	93.8	4,279	36.2	75.6	80.1	81.4	
A	109	55.0	88.1	89.0	89.0	3,358	43.0	82.3	85.5	86.2	
B	31	25.8	87.1	87.1	87.1	1,057	35.0	77.2	80.2	80.8	
AB	18	33.3	77.8	77.8	77.8	354	42.1	80.8	84.2	84.2	
Previous Transplant											
Yes	15	40.0	86.7	86.7	86.7	372	36.0	73.4	76.1	77.2	
No	271	51.3	89.3	90.0	90.4	8,676	39.0	78.7	82.6	83.5	
Primary Disease											
Congenital Disease	0	--	--	--	--	0	--	--	--	--	
Retransplant/Graft Failure	0	--	--	--	--	0	--	--	--	--	
Idiopathic Pulmonary Arterial Hypertension	7	42.9	71.4	71.4	71.4	621	27.9	60.7	64.1	66.0	
Cystic Fibrosis	7	28.6	71.4	71.4	71.4	391	37.6	77.0	79.0	80.1	
Idiopathic Pulmonary Fibrosis	172	59.3	92.4	93.6	93.6	5,740	42.4	81.3	84.5	85.1	
Alpha-1-Antitrypsin Deficiency	0	--	--	--	--	0	--	--	--	--	
Emphysema/COPD	65	29.2	86.2	86.2	87.7	1,747	27.7	75.7	82.8	84.5	
Other	35	54.3	85.7	85.7	85.7	549	50.5	78.3	81.1	81.2	
Missing	0	--	--	--	--	0	--	--	--	--	



B. Waiting List Information

Table B10. Time to transplant for waiting list candidates*

Candidates registered on the waiting list between 01/01/2019 and 06/30/2024

Percentile	Center	Months to Transplant**		U.S.
		OPO/DSA	Region	
5th	0.1	0.1	0.1	0.1
10th	0.2	0.2	0.2	0.2
25th	0.3	0.5	0.5	0.5
50th (median time to transplant)	1.0	1.4	1.6	1.5
75th	3.1	5.0	6.0	6.3

* If cells contain "Not Observed" fewer than that percentile of patients had received a transplant. For example, the 50th percentile of time to transplant is the time when 50% of candidates have received transplants. If waiting times are long, then the 50th percentile may not be observed during the follow-up period for this table. Also, if more than 50% of candidates are removed from the list due to death or other reasons before receiving transplants, then the 50th percentile of time to transplant will not be observed.

** Censored on 12/31/2024. Calculated as the months after listing, during which the corresponding percent of all patients initially listed had received a transplant.



B. Waiting List Information

Table B11. Offer Acceptance Practices: 01/01/2024 - 12/31/2024

Offers Acceptance Characteristics	This Center	OPO/DSA	Region	U.S.
Overall				
Number of Offers	997	2,074	8,300	70,502
Number of Acceptances	72	151	322	3,282
Expected Acceptances	67.8	118.0	413.4	3,281.2
Offer Acceptance Ratio*	1.06	1.27	0.78	1.00
95% Credible Interval**	[0.83, 1.31]	--	--	--
PHS increased infectious risk				
Number of Offers	203	404	1,584	12,956
Number of Acceptances	12	25	56	557
Expected Acceptances	12.4	20.8	75.7	558.4
Offer Acceptance Ratio*	0.97	1.18	0.75	1.00
95% Credible Interval**	[0.53, 1.55]	--	--	--
Donor was current smoker				
Number of Offers	111	229	738	7,082
Number of Acceptances	2	9	32	253
Expected Acceptances	5.1	9.2	27.9	254.2
Offer Acceptance Ratio*	0.57	0.98	1.14	1.00
95% Credible Interval**	[0.15, 1.24]	--	--	--
Donor age >= 55				
Number of Offers	134	390	1,667	14,163
Number of Acceptances	10	26	54	526
Expected Acceptances	6.6	16.2	66.2	524.2
Offer Acceptance Ratio*	1.39	1.54	0.82	1.00
95% Credible Interval**	[0.72, 2.28]	--	--	--
Hard-to-Place Lungs (Over 50 Offers)				
Number of Offers	125	521	1,936	20,082
Number of Acceptances	4	16	36	395
Expected Acceptances	3.7	11.8	40.5	396.0
Offer Acceptance Ratio*	1.05	1.31	0.89	1.00
95% Credible Interval**	[0.38, 2.04]	--	--	--
Donor more than 500 miles away				
Number of Offers	747	1,501	5,772	43,294
Number of Acceptances	46	97	194	1,678
Expected Acceptances	45.1	77.4	247.6	1,698.7
Offer Acceptance Ratio*	1.02	1.25	0.79	0.99
95% Credible Interval**	[0.75, 1.33]	--	--	--

* The offer acceptance ratio estimates the relative offer acceptance practice of UF Health Shands Hospital compared to the national offer acceptance practice. A ratio above one indicates the program accepts more offers compared to national offer acceptance practices (e.g., an offer acceptance ratio of 1.25 indicates a center accepts 25% more offers than is expected based on national offer acceptance practices), while a ratio below one indicates the program accepts fewer offers compared to national offer acceptance practices (e.g., an offer acceptance ratio of 0.75 indicates a center accepts 25% fewer offers than is expected based on national offer acceptance practices).

** As an example, the 95% Credible Interval for the overall offer acceptance ratio, [0.83, 1.31], indicates the location of FLUF's true offer acceptance ratio with 95% probability. The best estimate is 6% more likely to accept an offer compared to national acceptance behavior, but FLUF's performance could plausibly range from 17% reduced acceptance up to 31% higher acceptance.



B. Waiting List Information

Figure B10. Offer acceptance: Overall

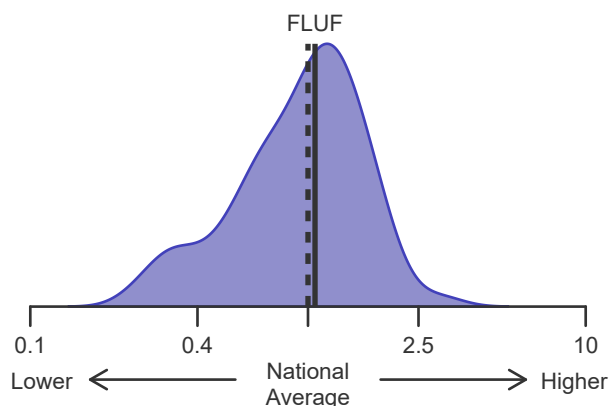


Figure B11. Offer acceptance: PHS increased infectious risk

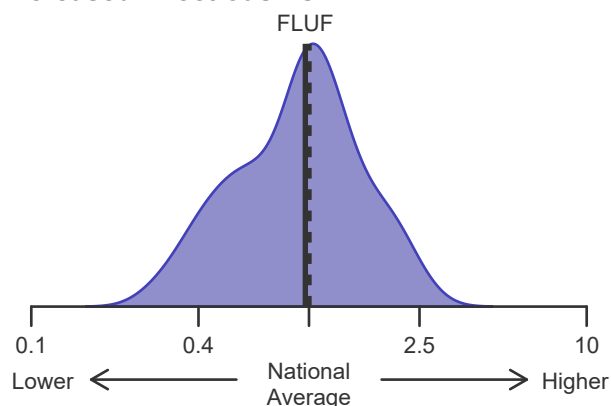


Figure B12. Offer acceptance: Donor was current smoker

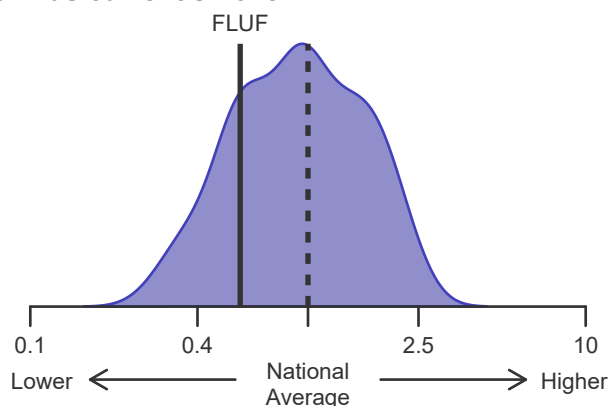


Figure B13. Offer acceptance: Donor age ≥ 55

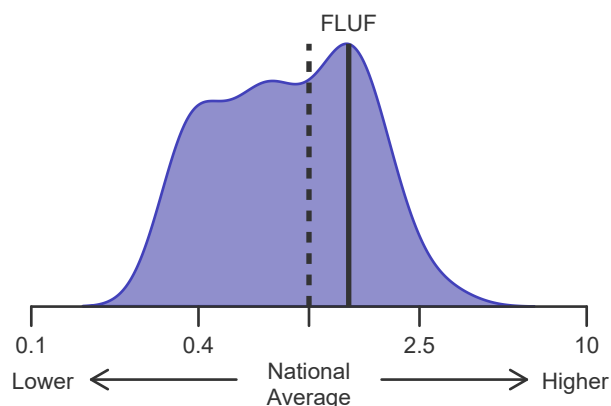


Figure B14. Offer acceptance: Offer number > 50

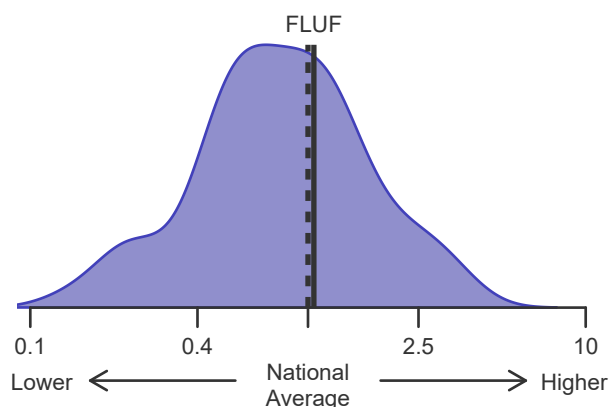
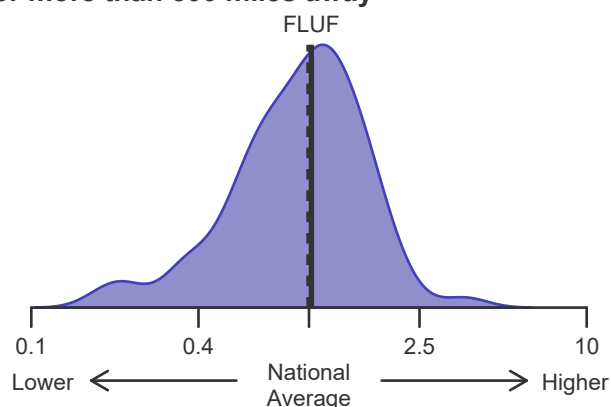


Figure B15. Offer acceptance: Donor more than 500 miles away





C. Transplant Information

Table C1D. Deceased donor transplant recipient demographic characteristics

Patients transplanted between 01/01/2024 and 12/31/2024

Characteristic	Percentage in each category		
	Center (N=73)	Region (N=324)	U.S. (N=3,340)
Ethnicity/Race (%)*			
White	63.0	58.0	67.6
African-American	13.7	15.1	10.4
Hispanic/Latino	17.8	22.2	14.4
Asian	0.0	2.2	3.4
Other	0.0	0.6	1.0
Unknown	5.5	1.9	3.1
Age (%)			
<2 years	0.0	0.0	0.0
2-11 years	1.4	0.3	0.2
12-17	1.4	0.3	0.5
18-34	4.1	3.1	4.0
35-49 years	6.8	12.0	10.8
50-64 years	43.8	45.1	43.1
65-69 years	28.8	25.0	25.3
70+ years	13.7	14.2	15.9
Gender (%)			
Male	65.8	58.3	59.5
Female	34.2	41.7	40.5

* Race and ethnicity are reported together as a single data element, reflecting their data collection (either race or ethnicity is required, but not both). Patients formerly coded as white and Hispanic are coded as Hispanic. Race and ethnicity sum to 100%.



C. Transplant Information

Table C2D. Deceased donor transplant recipient medical characteristics
Patients transplanted between 01/01/2024 and 12/31/2024

Characteristic	Percentage in each category		
	Center (N=73)	Region (N=324)	U.S. (N=3,340)
Blood Type (%)			
O	52.1	50.6	47.5
A	41.1	36.7	38.1
B	2.7	9.0	10.7
AB	4.1	3.7	3.7
Previous Transplant (%)			
Yes	0.0	0.9	3.8
No	100.0	99.1	96.2
Body Mass Index (%)			
0-20	9.6	9.9	14.9
21-25	39.7	34.9	32.5
26-30	41.1	43.8	37.5
31-35	9.6	10.8	14.0
36-40	0.0	0.3	0.7
41+	0.0	0.3	0.1
Unknown	0.0	0.0	0.2
Primary Disease (%)			
Idiopathic Pulmonary Arterial Hypertension	4.1	4.0	4.3
Cystic Fibrosis	2.7	2.5	2.4
Idiopathic Pulmonary Fibrosis	58.9	66.4	64.0
Emphysema/COPD	15.1	16.4	19.8
Other	19.2	10.8	9.4
Missing	0.0	0.0	0.1
Recipient Medical Condition at Transplant (%)			
Not Hospitalized	20.5	48.5	64.2
Hospitalized	9.6	10.5	16.3
ICU	69.9	41.0	19.5
Unknown	0.0	0.0	0.0



C. Transplant Information

Table C3D. Deceased donor characteristics

Transplants performed between 01/01/2024 and 12/31/2024

Donor Characteristic	Percentage in each category		
	Center (N=73)	Region (N=324)	U.S. (N=3,340)
Cause of Death (%)			
Deceased: Stroke	16.4	25.3	27.7
Deceased: MVA	19.2	13.0	12.3
Deceased: Other	64.4	61.7	60.0
Ethnicity/Race (%)*			
White	53.4	56.5	58.7
African-American	17.8	21.9	16.8
Hispanic/Latino	24.7	18.5	19.2
Asian	1.4	0.9	3.4
Other	2.7	1.2	1.2
Not Reported	0.0	0.9	0.6
Age (%)			
<2 years	0.0	0.0	0.0
2-11 years	1.4	0.9	0.5
12-17	8.2	4.6	5.3
18-34	56.2	36.4	35.5
35-49 years	19.2	34.3	33.8
50-64 years	12.3	20.7	22.3
65-69 years	2.7	2.5	1.9
70+ years	0.0	0.6	0.7
Gender (%)			
Male	68.5	59.0	59.9
Female	31.5	41.0	40.1
Blood Type (%)			
O	69.9	63.9	55.8
A	27.4	28.7	34.4
B	2.7	6.8	8.5
AB	0.0	0.6	1.3
Unknown	0.0	0.0	0.0

* Race and ethnicity are reported together as a single data element, reflecting their data collection (either race or ethnicity is required, but not both). Patients formerly coded as white and Hispanic are coded as Hispanic. Race and ethnicity sum to 100%.



C. Transplant Information

Table C4D. Deceased donor transplant characteristics
Transplants performed between 01/01/2024 and 12/31/2024

Transplant Characteristic	Percentage in each category		
	Center (N=73)	Region (N=324)	U.S. (N=3,340)
Total Ischemic Time (Minutes): Local (%)			
Deceased: 0-90 min	0.0	6.1	0.6
Deceased: 91-180 min	0.0	2.0	5.4
Deceased: 181-270 min	0.0	16.3	20.2
Deceased: 271-360 min	16.7	16.3	24.7
Deceased: 361+ min	83.3	59.2	49.1
Not Reported	0.0	0.0	0.0
Total Ischemic Time (Minutes): Shared (%)			
Deceased: 0-90 min	0.0	6.9	1.0
Deceased: 91-180 min	0.0	0.4	0.7
Deceased: 181-270 min	1.5	1.1	3.5
Deceased: 271-360 min	4.5	4.0	17.2
Deceased: 361+ min	94.0	87.3	77.5
Not Reported	0.0	0.4	0.1
Procedure Type (%)			
Single organ	98.6	99.1	98.8
Multi organ	1.4	0.9	1.2
Donor Location (%)			
Local Donation Service Area (DSA)	8.2	15.1	15.5
Another Donation Service Area (DSA)	91.8	84.9	84.5
Median Time in Hospital After Transplant	38.0 Days	25.0 Days	20.0 Days



C. Transplant Information

Table C5D. Adult (18+) 1-month survival with a functioning deceased donor graft

Single organ transplants performed between 01/01/2022 and 06/30/2024

Deaths and retransplants are considered graft failures

	FLUF	U.S.
Number of transplants evaluated	131	7,211
Estimated probability of surviving with a functioning graft at 1 month & [95% CI] (unadjusted for patient and donor characteristics)	99.24% [97.76%-100.00%]	97.42% [97.06%-97.79%]
Expected probability of surviving with a functioning graft at 1 month (adjusted for patient and donor characteristics)	97.68%	--
Number of observed graft failures (including deaths) during the first month after transplant	1	186
Number of expected graft failures (including deaths) during the first month after transplant	3.07	--
Estimated hazard ratio*	0.59	--
95% credible interval for the hazard ratio**	[0.12, 1.43]	--

* The hazard ratio provides an estimate of how UF Health Shands Hospital's results compare with what was expected based on modeling the transplant outcomes from all U.S. programs. A ratio above 1 indicates higher than expected graft failure rates (e.g., a hazard ratio of 1.5 would indicate 50% higher risk), and a ratio below 1 indicates lower than expected graft failure rates (e.g., a hazard ratio of 0.75 would indicate 25% lower risk). If FLUF's graft failure rate were precisely the expected rate, the estimated hazard ratio would be 1.0.

** The 95% credible interval, [0.12, 1.43], indicates the location of FLUF's true hazard ratio with 95% probability. The best estimate is 41% lower risk of graft failure compared to an average program, but FLUF's performance could plausibly range from 88% reduced risk up to 43% increased risk.

Figure C1D. Adult (18+) 1-month deceased donor graft failure HR estimate

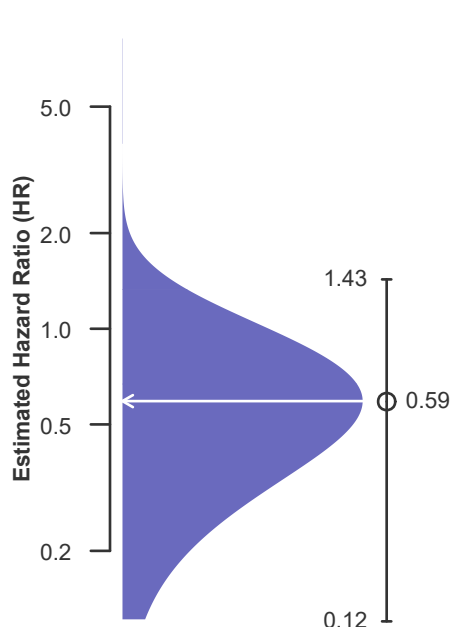
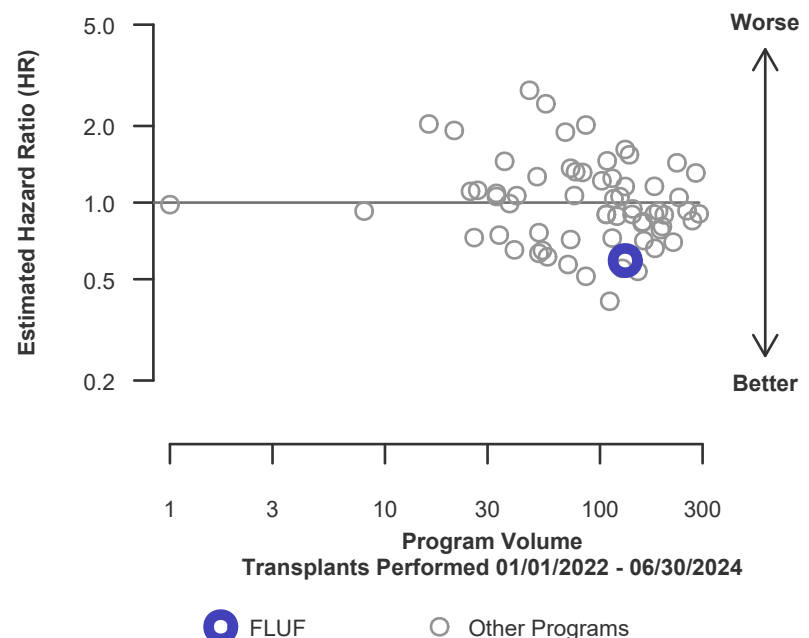


Figure C2D. Adult (18+) 1-month deceased donor graft failure HR program comparison





C. Transplant Information

Table C6D. Adult (18+) 90-Day survival with a functioning deceased donor graft

Single organ transplants performed between 01/01/2022 and 06/30/2024

Deaths and retransplants are considered graft failures

	FLUF	U.S.
Number of transplants evaluated	131	7,211
Estimated probability of surviving with a functioning graft at 90 days & [95% CI] (unadjusted for patient and donor characteristics)	99.24% [97.76%-100.00%]	95.38% [94.90%-95.87%]
Expected probability of surviving with a functioning graft at 90 days (adjusted for patient and donor characteristics)	95.83%	--
Number of observed graft failures (including deaths) during the first 90 days after transplant	1	333
Number of expected graft failures (including deaths) during the first 90 days after transplant	5.57	--
Estimated hazard ratio*	0.40	--
95% credible interval for the hazard ratio**	[0.08, 0.95]	--

* The hazard ratio provides an estimate of how UF Health Shands Hospital's results compare with what was expected based on modeling the transplant outcomes from all U.S. programs. A ratio above 1 indicates higher than expected graft failure rates (e.g., a hazard ratio of 1.5 would indicate 50% higher risk), and a ratio below 1 indicates lower than expected graft failure rates (e.g., a hazard ratio of 0.75 would indicate 25% lower risk). If FLUF's graft failure rate were precisely the expected rate, the estimated hazard ratio would be 1.0.

** The 95% credible interval, [0.08, 0.95], indicates the location of FLUF's true hazard ratio with 95% probability. The best estimate is 60% lower risk of graft failure compared to an average program, but FLUF's performance could plausibly range from 92% reduced risk up to 5% reduced risk.

Figure C3D. Adult (18+) 90-Day deceased donor graft failure HR estimate

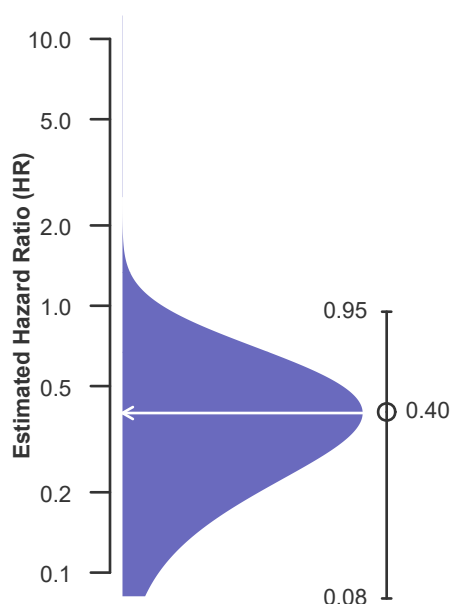
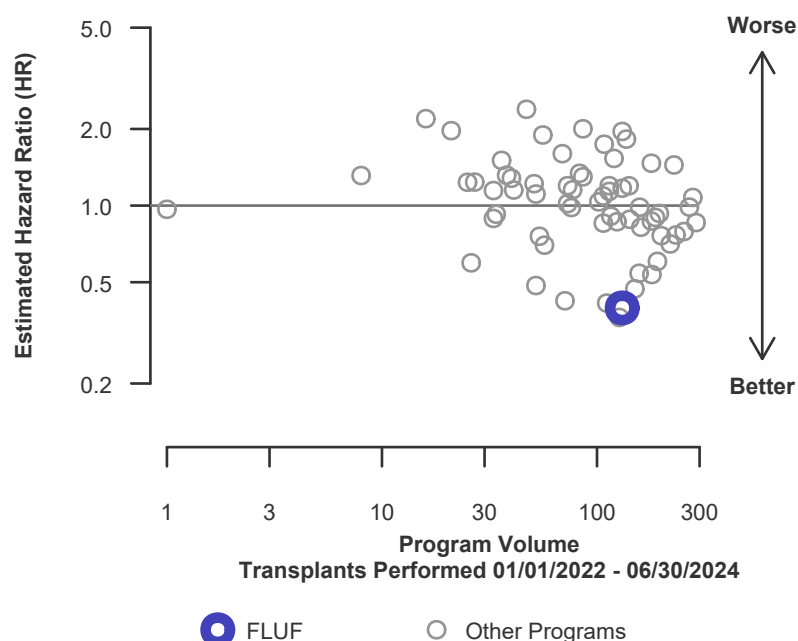


Figure C4D. Adult (18+) 90-Day deceased donor graft failure HR program comparison





C. Transplant Information

Table C7D. Adult (18+) 1-year survival with a functioning deceased donor graft

Single organ transplants performed between 01/01/2022 and 06/30/2024

Deaths and retransplants are considered graft failures

	FLUF	U.S.
Number of transplants evaluated	131	7,211
Estimated probability of surviving with a functioning graft at 1 year & [95% CI] (unadjusted for patient and donor characteristics)	95.33% [91.37%-99.46%]	89.56% [88.82%-90.31%]
Expected probability of surviving with a functioning graft at 1 year (adjusted for patient and donor characteristics)	90.49%	--
Number of observed graft failures (including deaths) during the first year after transplant	5	696
Number of expected graft failures (including deaths) during the first year after transplant	11.82	--
Estimated hazard ratio*	0.51	--
95% credible interval for the hazard ratio**	[0.20, 0.94]	--

* The hazard ratio provides an estimate of how UF Health Shands Hospital's results compare with what was expected based on modeling the transplant outcomes from all U.S. programs. A ratio above 1 indicates higher than expected graft failure rates (e.g., a hazard ratio of 1.5 would indicate 50% higher risk), and a ratio below 1 indicates lower than expected graft failure rates (e.g., a hazard ratio of 0.75 would indicate 25% lower risk). If FLUF's graft failure rate were precisely the expected rate, the estimated hazard ratio would be 1.0.

** The 95% credible interval, [0.20, 0.94], indicates the location of FLUF's true hazard ratio with 95% probability. The best estimate is 49% lower risk of graft failure compared to an average program, but FLUF's performance could plausibly range from 80% reduced risk up to 6% reduced risk.

Figure C5D. Adult (18+) 1-year deceased donor graft failure HR estimate

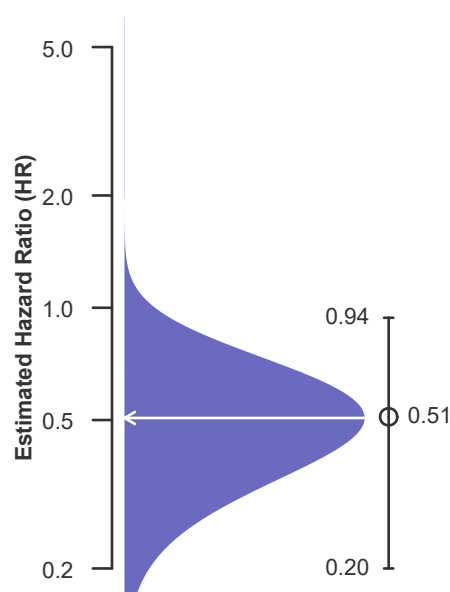
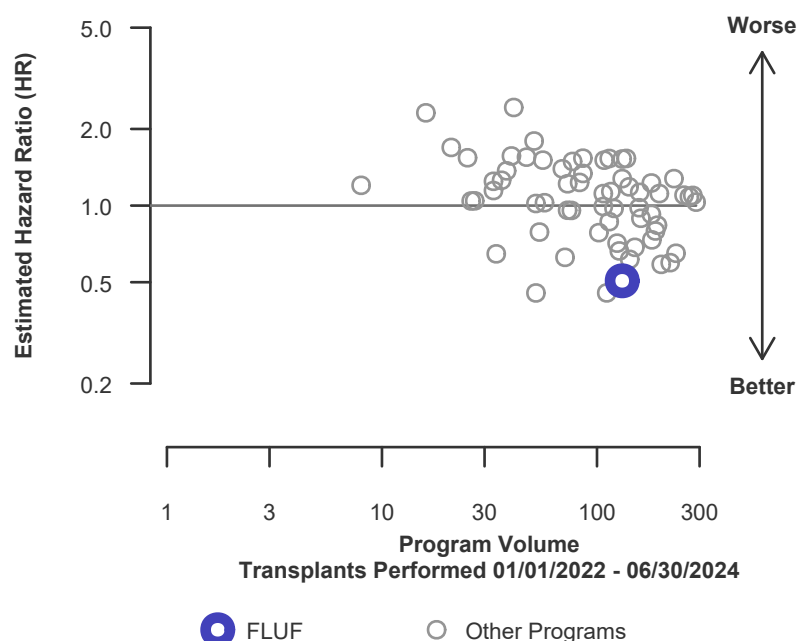


Figure C6D. Adult (18+) 1-year deceased donor graft failure HR program comparison





C. Transplant Information

Table C8D. Adult (18+) 1-year Conditional survival with a functioning deceased donor graft

Single organ transplants performed between 01/01/2022 and 06/30/2024

Deaths and retransplants are considered graft failures

	FLUF	U.S.
Number of transplants evaluated	130	6,877
Estimated probability of surviving with a functioning graft at 1 year, among patients with a functioning graft at day 90 & [95% CI] (unadjusted for patient and donor characteristics)	96.06% [93.46%-99.46%]	93.90% [93.60%-94.20%]
Expected probability of surviving with a functioning graft at 1 year, among patients with a functioning graft at day 90 (adjusted for patient and donor characteristics)	94.43%	--
Number of observed graft failures (including deaths) from day 91 through day 365 after transplant	4	363
Number of expected graft failures (including deaths) from day 91 through day 365 after transplant	6.25	--
Estimated hazard ratio*	0.73	--
95% credible interval for the hazard ratio**	[0.27, 1.41]	--

* The hazard ratio provides an estimate of how UF Health Shands Hospital's results compare with what was expected based on modeling the transplant outcomes from all U.S. programs. A ratio above 1 indicates higher than expected graft failure rates (e.g., a hazard ratio of 1.5 would indicate 50% higher risk), and a ratio below 1 indicates lower than expected graft failure rates (e.g., a hazard ratio of 0.75 would indicate 25% lower risk). If FLUF's graft failure rate were precisely the expected rate, the estimated hazard ratio would be 1.0.

** The 95% credible interval, [0.27, 1.41], indicates the location of FLUF's true hazard ratio with 95% probability. The best estimate is 27% lower risk of graft failure compared to an average program, but FLUF's performance could plausibly range from 73% reduced risk up to 41% increased risk.

Figure C7D. Adult (18+) 1-year Conditional deceased donor graft failure HR estimate

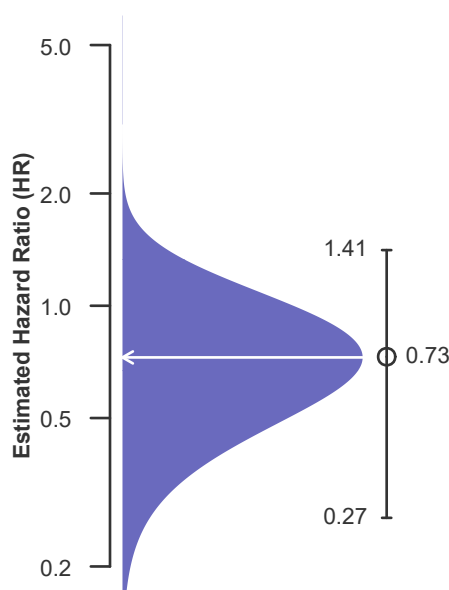
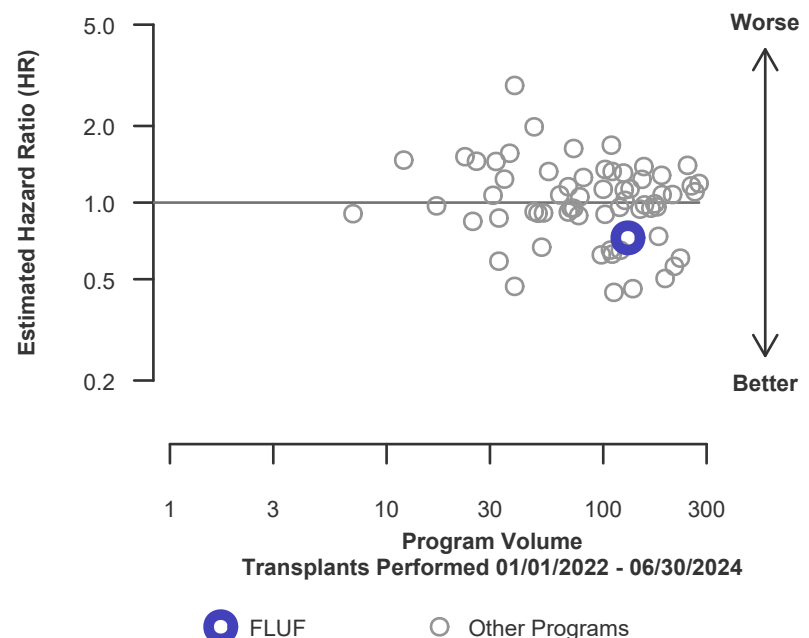


Figure C8D. Adult (18+) 1-year Conditional deceased donor graft failure HR program comparison





C. Transplant Information

Table C9D. Adult (18+) 3-year survival with a functioning deceased donor graft

Single organ transplants performed between 07/01/2019 and 03/12/2020, and 06/13/2020 and 12/31/2021

Deaths and retransplants are considered graft failures

Follow-up ends on 3/12/2020 for recipients transplanted prior to 3/13/2020

	FLUF	U.S.
Number of transplants evaluated	184	5,769
Estimated probability of surviving with a functioning graft at 3 years & [95% CI] (unadjusted for patient and donor characteristics)	82.66% [76.09%-89.79%]	72.00% [70.63%-73.40%]
Expected probability of surviving with a functioning graft at 3 years (adjusted for patient and donor characteristics)	72.99%	--
Number of observed graft failures (including deaths) during the first 3 years after transplant	21	1,176
Number of expected graft failures (including deaths) during the first 3 years after transplant	34.28	--
Estimated hazard ratio*	0.63	--
95% credible interval for the hazard ratio**	[0.40, 0.92]	--

* The hazard ratio provides an estimate of how UF Health Shands Hospital's results compare with what was expected based on modeling the transplant outcomes from all U.S. programs. A ratio above 1 indicates higher than expected graft failure rates (e.g., a hazard ratio of 1.5 would indicate 50% higher risk), and a ratio below 1 indicates lower than expected graft failure rates (e.g., a hazard ratio of 0.75 would indicate 25% lower risk). If FLUF's graft failure rate were precisely the expected rate, the estimated hazard ratio would be 1.0.

** The 95% credible interval, [0.40, 0.92], indicates the location of FLUF's true hazard ratio with 95% probability. The best estimate is 37% lower risk of graft failure compared to an average program, but FLUF's performance could plausibly range from 60% reduced risk up to 8% reduced risk.

Figure C9D. Adult (18+) 3-year deceased donor graft failure HR estimate

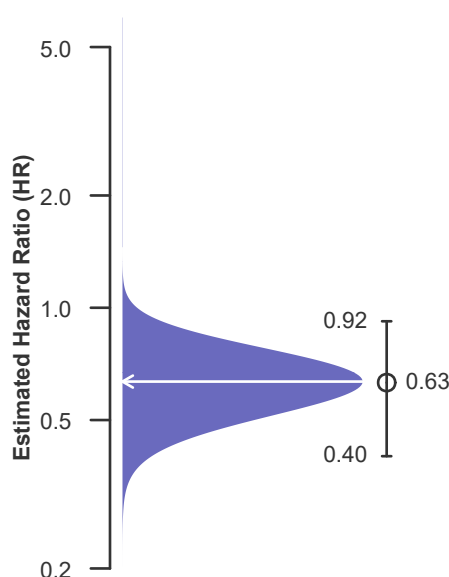
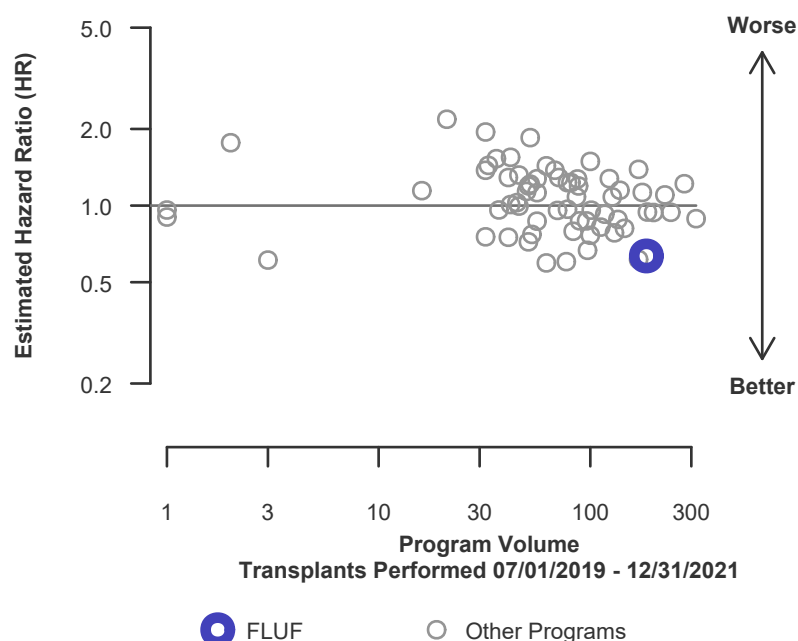


Figure C10D. Adult (18+) 3-year deceased donor graft failure HR program comparison





C. Transplant Information

Table C10D. Pediatric (<18) 1-month survival with a functioning deceased donor graft

Single organ transplants performed between 01/01/2022 and 06/30/2024

Deaths and retransplants are considered graft failures

	FLUF	U.S.
Number of transplants evaluated	4	64
Estimated probability of surviving with a functioning graft at 1 month & [95% CI] (unadjusted for patient and donor characteristics)	100.00% [100.00%-100.00%]	96.80% [92.53%-100.00%]
Expected probability of surviving with a functioning graft at 1 month (adjusted for patient and donor characteristics)	96.95%	--
Number of observed graft failures (including deaths) during the first month after transplant	0	2
Number of expected graft failures (including deaths) during the first month after transplant	0.12	--
Estimated hazard ratio*	0.94	--
95% credible interval for the hazard ratio**	[0.11, 2.62]	--

* The hazard ratio provides an estimate of how UF Health Shands Hospital's results compare with what was expected based on modeling the transplant outcomes from all U.S. programs. A ratio above 1 indicates higher than expected graft failure rates (e.g., a hazard ratio of 1.5 would indicate 50% higher risk), and a ratio below 1 indicates lower than expected graft failure rates (e.g., a hazard ratio of 0.75 would indicate 25% lower risk). If FLUF's graft failure rate were precisely the expected rate, the estimated hazard ratio would be 1.0.

** The 95% credible interval, [0.11, 2.62], indicates the location of FLUF's true hazard ratio with 95% probability. The best estimate is 6% lower risk of graft failure compared to an average program, but FLUF's performance could plausibly range from 89% reduced risk up to 162% increased risk.

Figure C11D. Pediatric (<18) 1-month deceased donor graft failure HR estimate

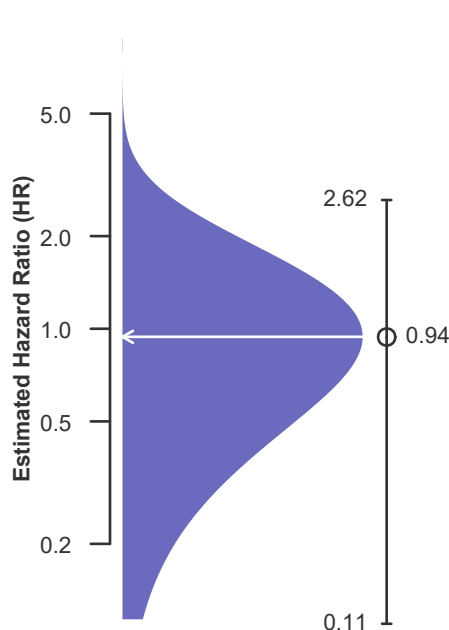
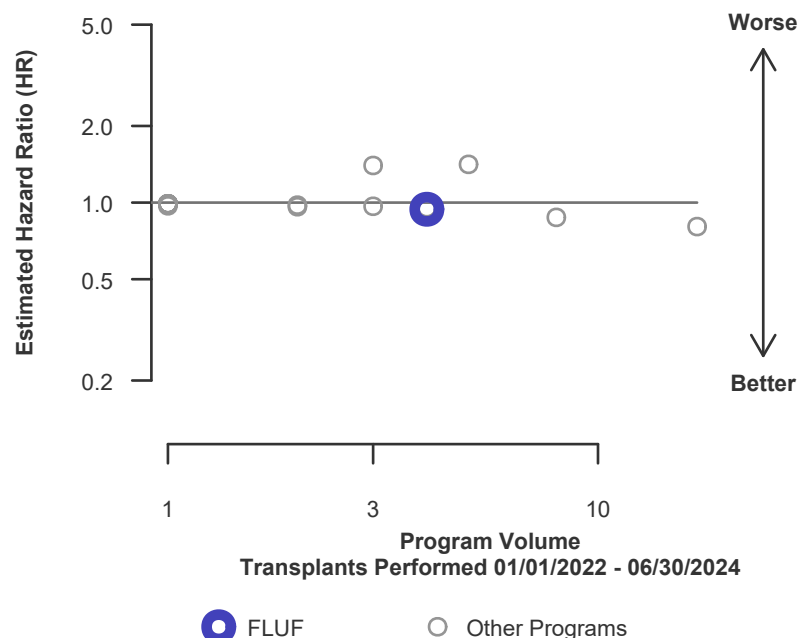


Figure C12D. Pediatric (<18) 1-month deceased donor graft failure HR program comparison





C. Transplant Information

Table C11D. Pediatric (<18) 90-Day survival with a functioning deceased donor graft

Single organ transplants performed between 01/01/2022 and 06/30/2024

Deaths and retransplants are considered graft failures

	FLUF	U.S.
Number of transplants evaluated	4	64
Estimated probability of surviving with a functioning graft at 90 days & [95% CI] (unadjusted for patient and donor characteristics)	100.00% [100.00%-100.00%]	91.96% [85.44%-98.97%]
Expected probability of surviving with a functioning graft at 90 days (adjusted for patient and donor characteristics)	92.07%	--
Number of observed graft failures (including deaths) during the first 90 days after transplant	0	5
Number of expected graft failures (including deaths) during the first 90 days after transplant	0.33	--
Estimated hazard ratio*	0.86	--
95% credible interval for the hazard ratio**	[0.10, 2.39]	--

* The hazard ratio provides an estimate of how UF Health Shands Hospital's results compare with what was expected based on modeling the transplant outcomes from all U.S. programs. A ratio above 1 indicates higher than expected graft failure rates (e.g., a hazard ratio of 1.5 would indicate 50% higher risk), and a ratio below 1 indicates lower than expected graft failure rates (e.g., a hazard ratio of 0.75 would indicate 25% lower risk). If FLUF's graft failure rate were precisely the expected rate, the estimated hazard ratio would be 1.0.

** The 95% credible interval, [0.10, 2.39], indicates the location of FLUF's true hazard ratio with 95% probability. The best estimate is 14% lower risk of graft failure compared to an average program, but FLUF's performance could plausibly range from 90% reduced risk up to 139% increased risk.

Figure C13D. Pediatric (<18) 90-Day deceased donor graft failure HR estimate

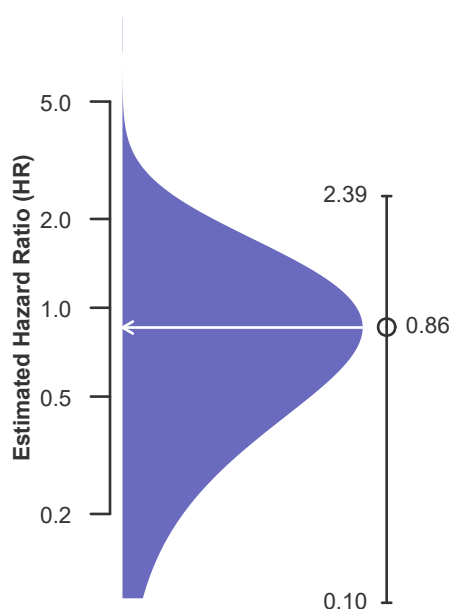
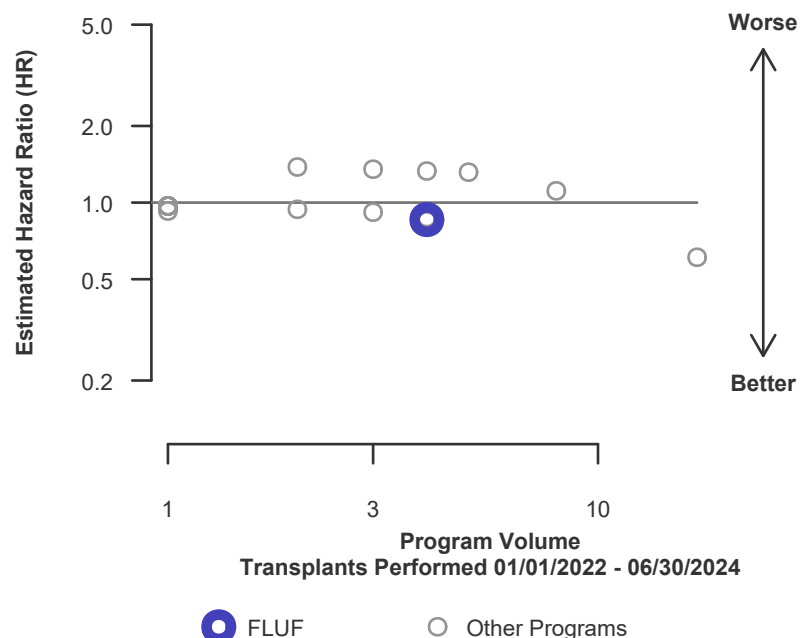


Figure C14D. Pediatric (<18) 90-Day deceased donor graft failure HR program comparison





C. Transplant Information

Table C12D. Pediatric (<18) 1-year survival with a functioning deceased donor graft

Single organ transplants performed between 01/01/2022 and 06/30/2024

Deaths and retransplants are considered graft failures

	FLUF	U.S.
Number of transplants evaluated	4	64
Estimated probability of surviving with a functioning graft at 1 year & [95% CI] (unadjusted for patient and donor characteristics)	100.00% [100.00%-100.00%]	81.28% [71.79%-92.01%]
Expected probability of surviving with a functioning graft at 1 year (adjusted for patient and donor characteristics)	80.81%	--
Number of observed graft failures (including deaths) during the first year after transplant	0	11
Number of expected graft failures (including deaths) during the first year after transplant	0.73	--
Estimated hazard ratio*	0.73	--
95% credible interval for the hazard ratio**	[0.09, 2.04]	--

* The hazard ratio provides an estimate of how UF Health Shands Hospital's results compare with what was expected based on modeling the transplant outcomes from all U.S. programs. A ratio above 1 indicates higher than expected graft failure rates (e.g., a hazard ratio of 1.5 would indicate 50% higher risk), and a ratio below 1 indicates lower than expected graft failure rates (e.g., a hazard ratio of 0.75 would indicate 25% lower risk). If FLUF's graft failure rate were precisely the expected rate, the estimated hazard ratio would be 1.0.

** The 95% credible interval, [0.09, 2.04], indicates the location of FLUF's true hazard ratio with 95% probability. The best estimate is 27% lower risk of graft failure compared to an average program, but FLUF's performance could plausibly range from 91% reduced risk up to 104% increased risk.

Figure C15D. Pediatric (<18) 1-year deceased donor graft failure HR estimate

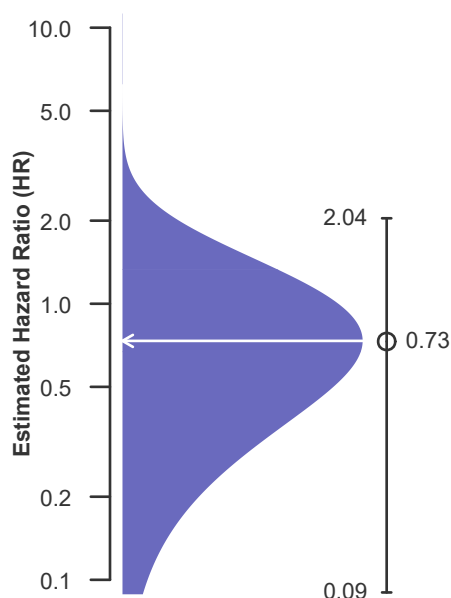
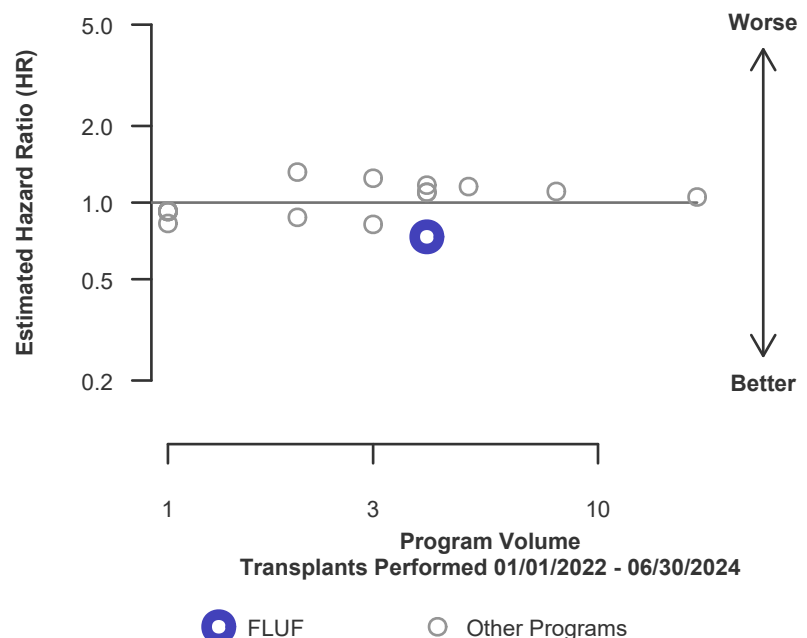


Figure C16D. Pediatric (<18) 1-year deceased donor graft failure HR program comparison





C. Transplant Information

Table C13D. Pediatric (<18) 1-year Conditional survival with a functioning deceased donor graft

Single organ transplants performed between 01/01/2022 and 06/30/2024

Deaths and retransplants are considered graft failures

	FLUF	U.S.
Number of transplants evaluated	4	57
Estimated probability of surviving with a functioning graft at 1 year, among patients with a functioning graft at day 90 & [95% CI] (unadjusted for patient and donor characteristics)	100.00% [100.00%-100.00%]	88.38% [84.02%-92.97%]
Expected probability of surviving with a functioning graft at 1 year, among patients with a functioning graft at day 90 (adjusted for patient and donor characteristics)	87.77%	--
Number of observed graft failures (including deaths) from day 91 through day 365 after transplant	0	6
Number of expected graft failures (including deaths) from day 91 through day 365 after transplant	0.39	--
Estimated hazard ratio*	0.84	--
95% credible interval for the hazard ratio**	[0.10, 2.33]	--

* The hazard ratio provides an estimate of how UF Health Shands Hospital's results compare with what was expected based on modeling the transplant outcomes from all U.S. programs. A ratio above 1 indicates higher than expected graft failure rates (e.g., a hazard ratio of 1.5 would indicate 50% higher risk), and a ratio below 1 indicates lower than expected graft failure rates (e.g., a hazard ratio of 0.75 would indicate 25% lower risk). If FLUF's graft failure rate were precisely the expected rate, the estimated hazard ratio would be 1.0.

** The 95% credible interval, [0.10, 2.33], indicates the location of FLUF's true hazard ratio with 95% probability. The best estimate is 16% lower risk of graft failure compared to an average program, but FLUF's performance could plausibly range from 90% reduced risk up to 133% increased risk.

Figure C17D. Pediatric (<18) 1-year Conditional deceased donor graft failure HR estimate

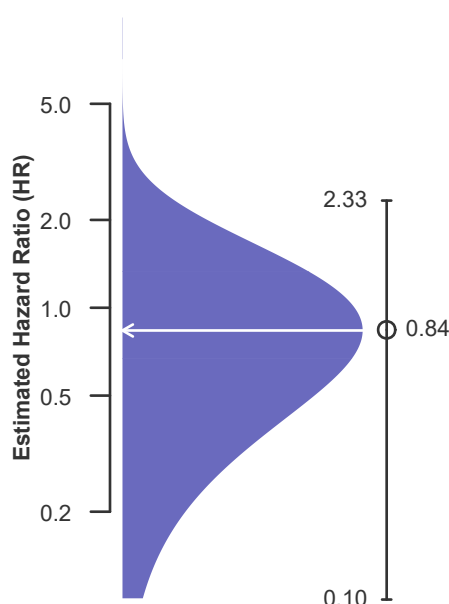
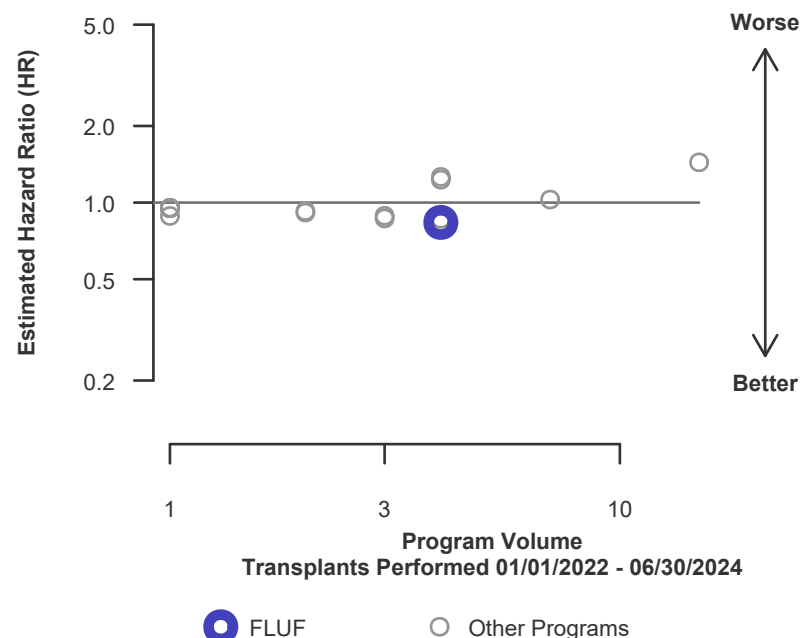


Figure C18D. Pediatric (<18) 1-year Conditional deceased donor graft failure HR program comparison





C. Transplant Information

Table C14D. Pediatric (<18) 3-year survival with a functioning deceased donor graft

Single organ transplants performed between 07/01/2019 and 03/12/2020, and 06/13/2020 and 12/31/2021

Deaths and retransplants are considered graft failures

Follow-up ends on 3/12/2020 for recipients transplanted prior to 3/13/2020

	FLUF	U.S.
Number of transplants evaluated	1	76
Estimated probability of surviving with a functioning graft at 3 years & [95% CI] (unadjusted for patient and donor characteristics)	100.00% [100.00%-100.00%]	73.08% [60.95%-87.63%]
Expected probability of surviving with a functioning graft at 3 years (adjusted for patient and donor characteristics)	77.22%	--
Number of observed graft failures (including deaths) during the first 3 years after transplant	0	13
Number of expected graft failures (including deaths) during the first 3 years after transplant	0.05	--
Estimated hazard ratio*	0.97	--
95% credible interval for the hazard ratio**	[0.12, 2.71]	--

* The hazard ratio provides an estimate of how UF Health Shands Hospital's results compare with what was expected based on modeling the transplant outcomes from all U.S. programs. A ratio above 1 indicates higher than expected graft failure rates (e.g., a hazard ratio of 1.5 would indicate 50% higher risk), and a ratio below 1 indicates lower than expected graft failure rates (e.g., a hazard ratio of 0.75 would indicate 25% lower risk). If FLUF's graft failure rate were precisely the expected rate, the estimated hazard ratio would be 1.0.

** The 95% credible interval, [0.12, 2.71], indicates the location of FLUF's true hazard ratio with 95% probability. The best estimate is 3% lower risk of graft failure compared to an average program, but FLUF's performance could plausibly range from 88% reduced risk up to 171% increased risk.

Figure C19D. Pediatric (<18) 3-year deceased donor graft failure HR estimate

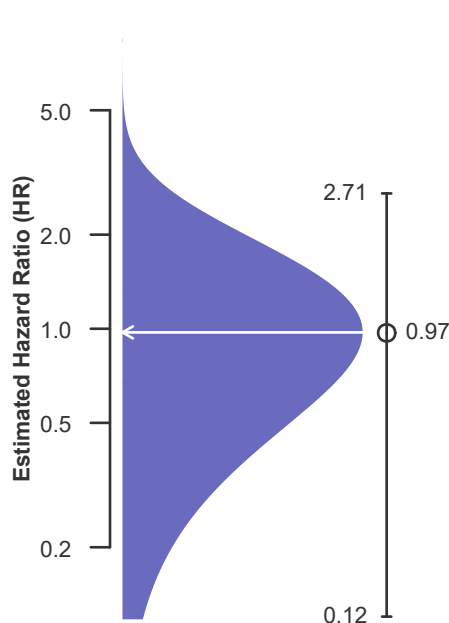
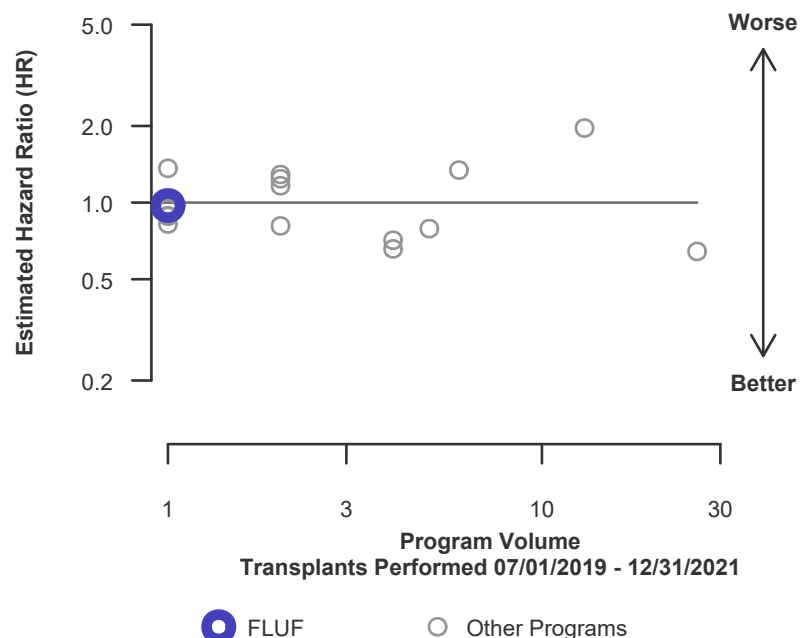


Figure C20D. Pediatric (<18) 3-year deceased donor graft failure HR program comparison





C. Transplant Information

Table C15D. Adult (18+) 1-month patient survival (deceased donor graft recipients)

Single organ transplants performed between 01/01/2022 and 06/30/2024

Retransplants excluded

	FLUF	U.S.
Number of transplants evaluated	129	6,990
Estimated probability of surviving at 1 month & [95% CI] (unadjusted for patient and donor characteristics)	99.22% [97.72%-100.00%]	97.84% [97.50%-98.18%]
Expected probability of surviving at 1 month (adjusted for patient and donor characteristics)	98.03%	--
Number of observed deaths during the first month after transplant	1	151
Number of expected deaths during the first month after transplant	2.56	--
Estimated hazard ratio*	0.66	--
95% credible interval for the hazard ratio**	[0.14, 1.58]	--

* The hazard ratio provides an estimate of how UF Health Shands Hospital's results compare with what was expected based on modeling the transplant outcomes from all U.S. programs. A ratio above 1 indicates higher than expected patient death rates (e.g., a hazard ratio of 1.5 would indicate 50% higher risk), and a ratio below 1 indicates lower than expected patient death rates (e.g., a hazard ratio of 0.75 would indicate 25% lower risk). If FLUF's patient death rate were precisely the expected rate, the estimated hazard ratio would be 1.0.

** The 95% credible interval, [0.14, 1.58], indicates the location of FLUF's true hazard ratio with 95% probability. The best estimate is 34% lower risk of patient death compared to an average program, but FLUF's performance could plausibly range from 86% reduced risk up to 58% increased risk.

Figure C21D. Adult (18+) 1-month patient death HR estimate (deceased donor grafts)

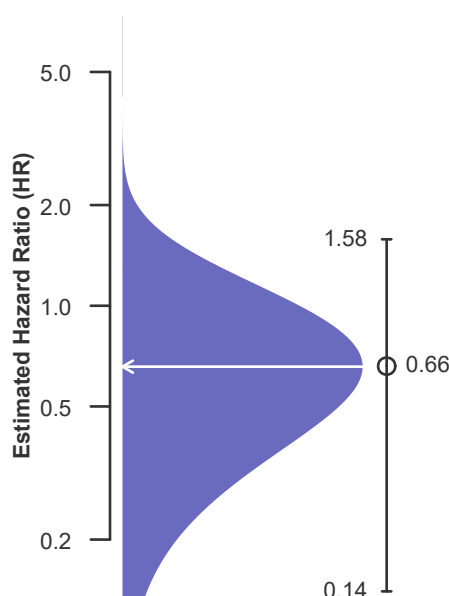
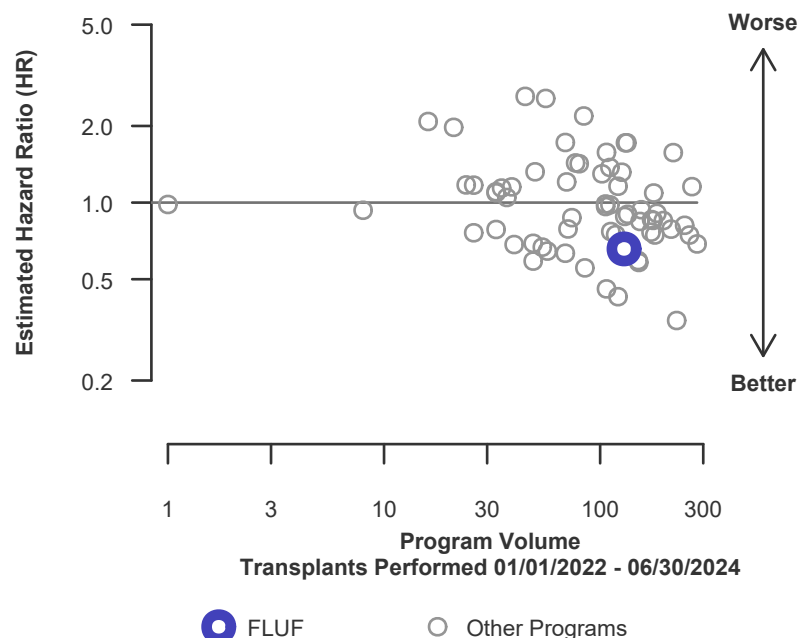


Figure C22D. Adult (18+) 1-month patient death HR program comparison (deceased donor grafts)





C. Transplant Information

Table C16D. Adult (18+) 1-year patient survival (deceased donor graft recipients)

Single organ transplants performed between 01/01/2022 and 06/30/2024

Retransplants excluded

	FLUF	U.S.
Number of transplants evaluated	129	6,990
Estimated probability of surviving at 1 year & [95% CI] (unadjusted for patient and donor characteristics)	96.31% [92.78%-99.98%]	90.25% [89.52%-90.98%]
Expected probability of surviving at 1 year (adjusted for patient and donor characteristics)	91.01%	--
Number of observed deaths during the first year after transplant	4	632
Number of expected deaths during the first year after transplant	10.98	--
Estimated hazard ratio*	0.46	--
95% credible interval for the hazard ratio**	[0.17, 0.90]	--

* The hazard ratio provides an estimate of how UF Health Shands Hospital's results compare with what was expected based on modeling the transplant outcomes from all U.S. programs. A ratio above 1 indicates higher than expected patient death rates (e.g., a hazard ratio of 1.5 would indicate 50% higher risk), and a ratio below 1 indicates lower than expected patient death rates (e.g., a hazard ratio of 0.75 would indicate 25% lower risk). If FLUF's patient death rate were precisely the expected rate, the estimated hazard ratio would be 1.0.

** The 95% credible interval, [0.17, 0.90], indicates the location of FLUF's true hazard ratio with 95% probability. The best estimate is 54% lower risk of patient death compared to an average program, but FLUF's performance could plausibly range from 83% reduced risk up to 10% reduced risk.

Figure C23D. Adult (18+) 1-year patient death HR estimate (deceased donor grafts)

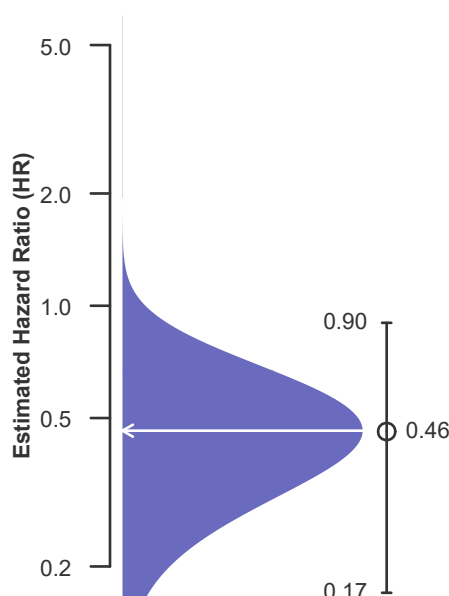
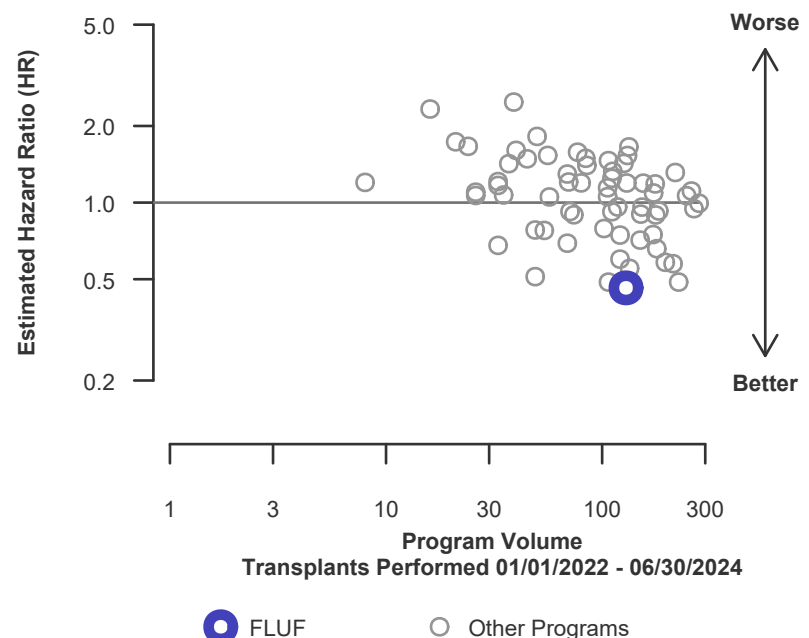


Figure C24D. Adult (18+) 1-year patient death HR program comparison (deceased donor grafts)





C. Transplant Information

Table C17D. Adult (18+) 3-year patient survival (deceased donor graft recipients)

Single organ transplants performed between 07/01/2019 and 03/12/2020, and 06/13/2020 and 12/31/2021

Retransplants excluded

Follow-up ends on 3/12/2020 for recipients transplanted prior to 3/13/2020

	FLUF	U.S.
Number of transplants evaluated	177	5,583
Estimated probability of surviving at 3 years & [95% CI] (unadjusted for patient and donor characteristics)	82.84% [76.19%-90.07%]	73.56% [72.20%-74.95%]
Expected probability of surviving at 3 years (adjusted for patient and donor characteristics)	73.92%	--
Number of observed deaths during the first 3 years after transplant	20	1,082
Number of expected deaths during the first 3 years after transplant	32.40	--
Estimated hazard ratio*	0.64	--
95% credible interval for the hazard ratio**	[0.40, 0.93]	--

* The hazard ratio provides an estimate of how UF Health Shands Hospital's results compare with what was expected based on modeling the transplant outcomes from all U.S. programs. A ratio above 1 indicates higher than expected patient death rates (e.g., a hazard ratio of 1.5 would indicate 50% higher risk), and a ratio below 1 indicates lower than expected patient death rates (e.g., a hazard ratio of 0.75 would indicate 25% lower risk). If FLUF's patient death rate were precisely the expected rate, the estimated hazard ratio would be 1.0.

** The 95% credible interval, [0.40, 0.93], indicates the location of FLUF's true hazard ratio with 95% probability. The best estimate is 36% lower risk of patient death compared to an average program, but FLUF's performance could plausibly range from 60% reduced risk up to 7% reduced risk.

Figure C25D. Adult (18+) 3-year patient death HR estimate (deceased donor grafts)

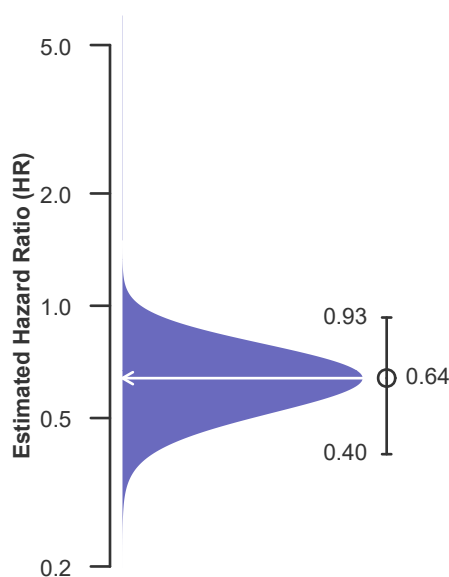
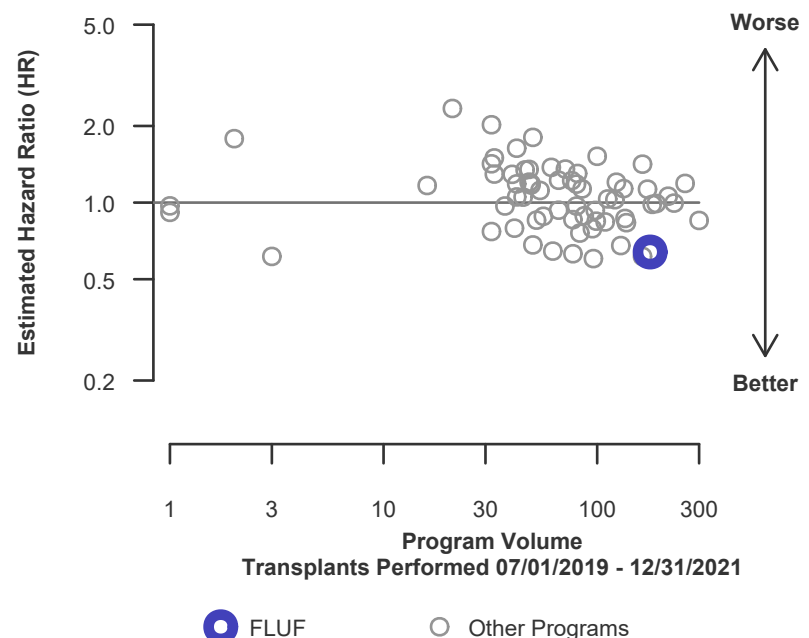


Figure C26D. Adult (18+) 3-year patient death HR program comparison (deceased donor grafts)





C. Transplant Information

Table C18D. Pediatric (<18) 1-month patient survival (deceased donor graft recipients)

Single organ transplants performed between 01/01/2022 and 06/30/2024

Retransplants excluded

	FLUF	U.S.
Number of transplants evaluated	4	62
Estimated probability of surviving at 1 month & [95% CI] (unadjusted for patient and donor characteristics)	100.00% [100.00%-100.00%]	96.77% [92.47%-100.00%]
Expected probability of surviving at 1 month (adjusted for patient and donor characteristics)	97.39%	--
Number of observed deaths during the first month after transplant	0	2
Number of expected deaths during the first month after transplant	0.11	--
Estimated hazard ratio*	0.95	--
95% credible interval for the hazard ratio**	[0.11, 2.64]	--

* The hazard ratio provides an estimate of how UF Health Shands Hospital's results compare with what was expected based on modeling the transplant outcomes from all U.S. programs. A ratio above 1 indicates higher than expected patient death rates (e.g., a hazard ratio of 1.5 would indicate 50% higher risk), and a ratio below 1 indicates lower than expected patient death rates (e.g., a hazard ratio of 0.75 would indicate 25% lower risk). If FLUF's patient death rate were precisely the expected rate, the estimated hazard ratio would be 1.0.

** The 95% credible interval, [0.11, 2.64], indicates the location of FLUF's true hazard ratio with 95% probability. The best estimate is 5% lower risk of patient death compared to an average program, but FLUF's performance could plausibly range from 89% reduced risk up to 164% increased risk.

Figure C27D. Pediatric (<18) 1-month patient death HR estimate (deceased donor grafts)

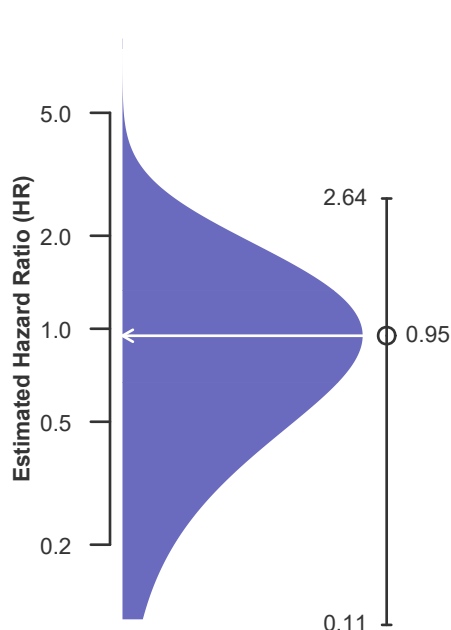
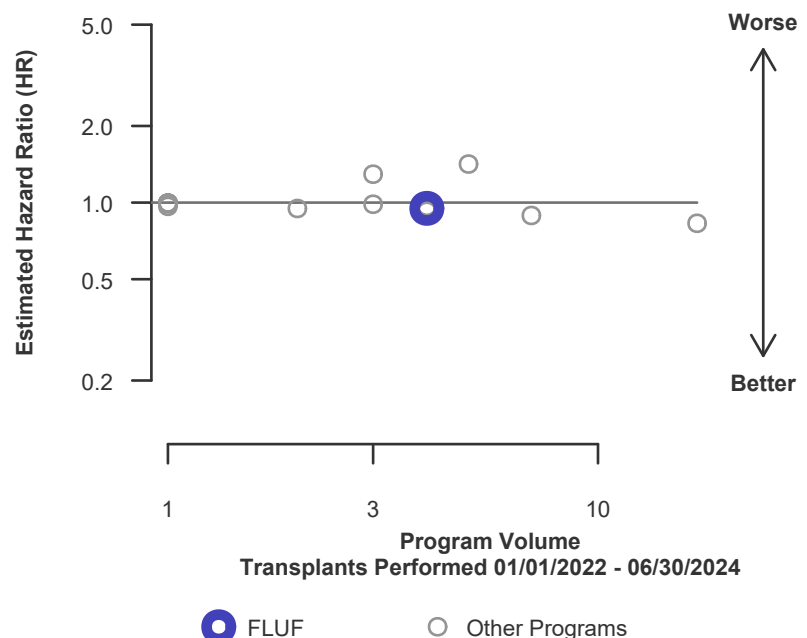


Figure C28D. Pediatric (<18) 1-month patient death HR program comparison (deceased donor grafts)





C. Transplant Information

Table C19D. Pediatric (<18) 1-year patient survival (deceased donor graft recipients)

Single organ transplants performed between 01/01/2022 and 06/30/2024

Retransplants excluded

	FLUF	U.S.
Number of transplants evaluated	4	62
Estimated probability of surviving at 1 year & [95% CI] (unadjusted for patient and donor characteristics)	100.00% [100.00%-100.00%]	81.31% [71.85%-92.03%]
Expected probability of surviving at 1 year (adjusted for patient and donor characteristics)	79.44%	--
Number of observed deaths during the first year after transplant	0	11
Number of expected deaths during the first year after transplant	0.76	--
Estimated hazard ratio*	0.72	--
95% credible interval for the hazard ratio**	[0.09, 2.02]	--

* The hazard ratio provides an estimate of how UF Health Shands Hospital's results compare with what was expected based on modeling the transplant outcomes from all U.S. programs. A ratio above 1 indicates higher than expected patient death rates (e.g., a hazard ratio of 1.5 would indicate 50% higher risk), and a ratio below 1 indicates lower than expected patient death rates (e.g., a hazard ratio of 0.75 would indicate 25% lower risk). If FLUF's patient death rate were precisely the expected rate, the estimated hazard ratio would be 1.0.

** The 95% credible interval, [0.09, 2.02], indicates the location of FLUF's true hazard ratio with 95% probability. The best estimate is 28% lower risk of patient death compared to an average program, but FLUF's performance could plausibly range from 91% reduced risk up to 102% increased risk.

Figure C29D. Pediatric (<18) 1-year patient death HR estimate (deceased donor grafts)

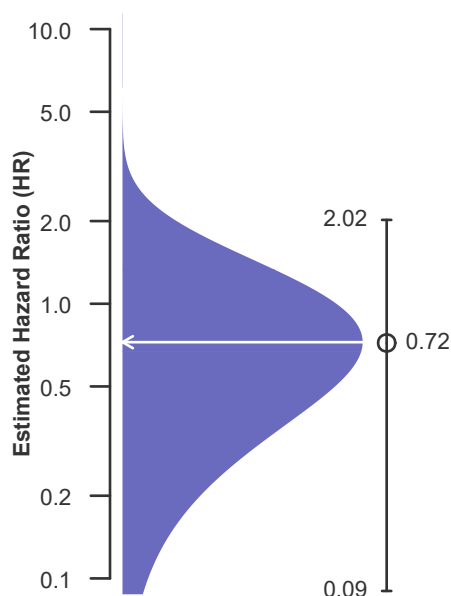
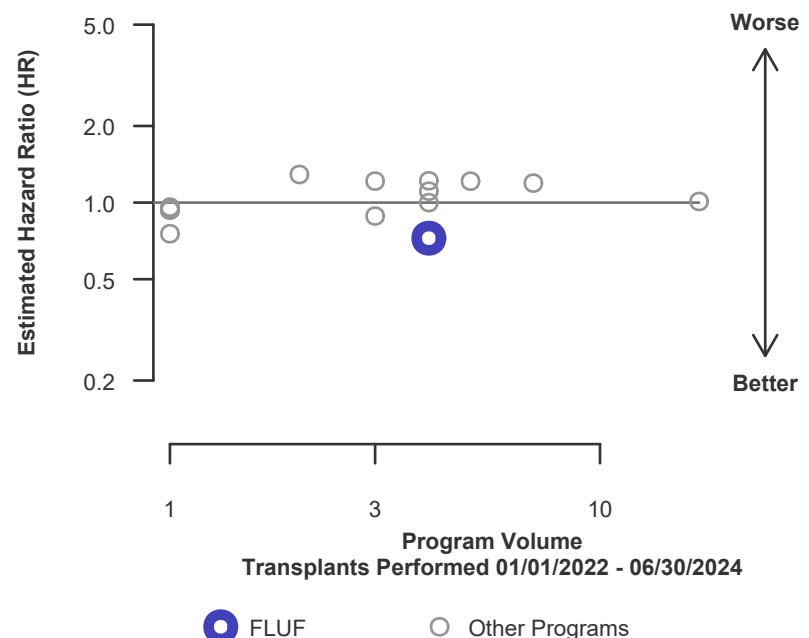


Figure C30D. Pediatric (<18) 1-year patient death HR program comparison (deceased donor grafts)





C. Transplant Information

Table C20D. Pediatric (<18) 3-year patient survival (deceased donor graft recipients)

Single organ transplants performed between 07/01/2019 and 03/12/2020, and 06/13/2020 and 12/31/2021

Retransplants excluded

Follow-up ends on 3/12/2020 for recipients transplanted prior to 3/13/2020

	FLUF	U.S.
Number of transplants evaluated	1	72
Estimated probability of surviving at 3 years & [95% CI] (unadjusted for patient and donor characteristics)	100.00% [100.00%-100.00%]	78.63% [67.78%-91.22%]
Expected probability of surviving at 3 years (adjusted for patient and donor characteristics)	78.86%	--
Number of observed deaths during the first 3 years after transplant	0	11
Number of expected deaths during the first 3 years after transplant	0.07	--
Estimated hazard ratio*	0.96	--
95% credible interval for the hazard ratio**	[0.12, 2.69]	--

* The hazard ratio provides an estimate of how UF Health Shands Hospital's results compare with what was expected based on modeling the transplant outcomes from all U.S. programs. A ratio above 1 indicates higher than expected patient death rates (e.g., a hazard ratio of 1.5 would indicate 50% higher risk), and a ratio below 1 indicates lower than expected patient death rates (e.g., a hazard ratio of 0.75 would indicate 25% lower risk). If FLUF's patient death rate were precisely the expected rate, the estimated hazard ratio would be 1.0.

** The 95% credible interval, [0.12, 2.69], indicates the location of FLUF's true hazard ratio with 95% probability. The best estimate is 4% lower risk of patient death compared to an average program, but FLUF's performance could plausibly range from 88% reduced risk up to 169% increased risk.

Figure C31D. Pediatric (<18) 3-year patient death HR estimate (deceased donor grafts)

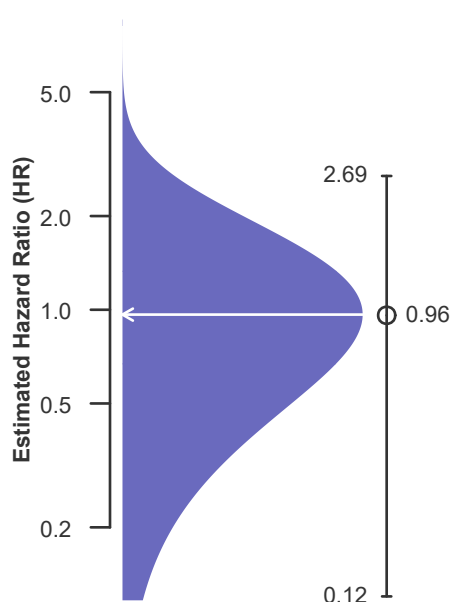
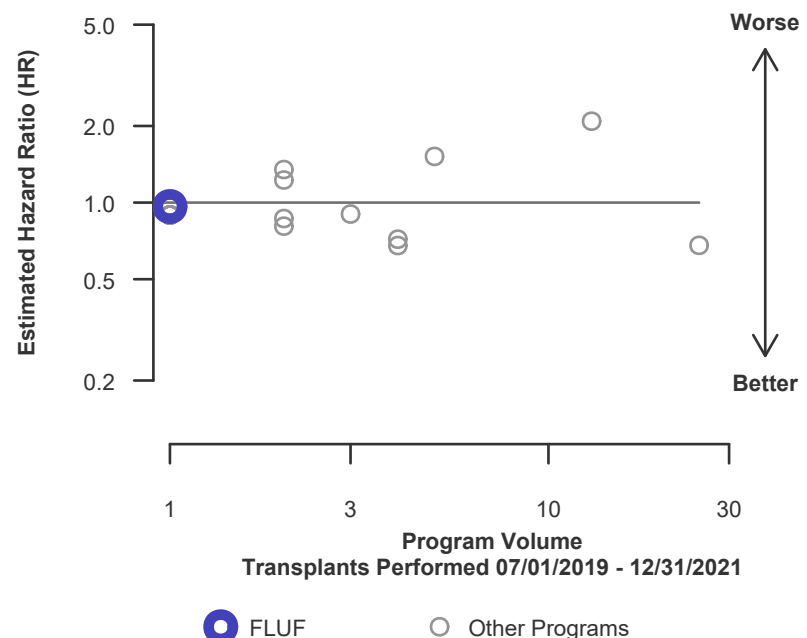


Figure C32D. Pediatric (<18) 3-year patient death HR program comparison (deceased donor grafts)





C. Transplant Information

Table C21. Multi-organ transplant graft survival: 01/01/2022 - 06/30/2024

Adult (18+) Transplants

Transplant Type	First-Year Outcomes					
	Transplants Performed		Lung Graft Failures		Estimated Lung Graft Survival	
	FLUF-TX1	USA	FLUF-TX1	USA	FLUF-TX1	USA
Heart-Lung	2	127	0	20	100.0%	84.3%
Kidney-Heart-Lung	1	4	0	1	100.0%	75.0%
Kidney Lung	1	55	0	10	100.0%	80.8%
Liver-Lung	2	45	0	7	100.0%	83.0%

Pediatric (<18) Transplants

No pediatric (<18) multi-organ transplants were performed

Table C22. Multi-organ transplant patient survival: 01/01/2022 - 06/30/2024

Adult (18+) Transplants

Transplant Type	First-Year Outcomes					
	Transplants Performed		Patient Deaths		Estimated Patient Survival	
	FLUF-TX1	USA	FLUF-TX1	USA	FLUF-TX1	USA
Heart-Lung	2	127	0	20	100.0%	84.3%
Kidney-Heart-Lung	1	4	0	1	100.0%	75.0%
Kidney Lung	1	55	0	10	100.0%	81.8%
Liver-Lung	2	45	0	7	100.0%	84.4%

Pediatric (<18) Transplants

No pediatric (<18) multi-organ transplants were performed