

Disclosures

Yoon Son Ahn, MS

Biostatistician

Scientific Registry of Transplant Recipients, Minneapolis, MN, USA

I have no financial relationships to disclose within the past 12 months relevant to my presentation. The ACCME defines 'relevant' financial relationships as financial relationships in any amount occurring within the past 12 months that create a conflict of interest.

This work was supported wholly or in part by HRSA contract 75R60220C00011. The content is the responsibility of the authors alone and does not necessarily reflect the views or policies of the Department of HHS, nor does mention of trade names, commercial products, or organizations imply endorsement by the U.S. Government.



SCIENTIFIC REGISTRY OF
TRANSPLANT RECIPIENTS



SCIENTIFIC
REGISTRY OF
TRANSPLANT
RECIPIENTS

A Patient-Facing Tool for Multiorgan Transplant Outcomes

Y. Ahn, MS; G. Lyden, PhD; Y. Mi; D. Zaun, MS;
C. Schaffhausen, PhD; J. Snyder, PhD, MS; A. Hart, MD, MS

June 6, 2023

Background

- Patients needing multiorgan transplants have difficulty finding information about outcomes, whereas ample data on single-organ transplants are available.
- We developed a patient-facing multiorgan transplant tool to provide interactive information about the number of transplants performed nationally and by program, national-level death and graft failure rates at up to 10 years posttransplant, and an individualized risk calculator to predict posttransplant outcomes for the 3 most-performed adult multiorgan transplant combinations: kidney-pancreas, liver-kidney, and heart-kidney.



Methods

- Used Scientific Registry of Transplant Recipients (SRTR) data for adult and pediatric multiorgan transplant recipients who received transplants January 1, 2010 – June 30, 2022.
 - Select multiorgan transplant combination, cohort start year 2010 vs 2015, and adult vs pediatric
- Outcomes were death and all-cause graft failure.
 - Unadjusted Kaplan-Meier survival analysis for each outcome with censoring on June 30, 2022
- An individualized risk calculator: After selecting various fields, a mixed-effects Cox model is fit with the organ-appropriate predictors and a random effect for transplant program. The modeled proportional hazards to predict the probabilities of experiencing each outcome after transplant.



Results

Multi-Organ Transplant Analysis Tool

Choose your transplant combination:
Kidney-Pancreas

Choose your age group:
Adult (18+)

Choose your state:
All states

Transplants shown are from 2015 on. Check this box to see transplants from 2010 on, for long-term post-transplant outcomes.

Enter your zip code

Information for Simultaneous Kidney-Pancreas Transplant

List of Centers | National Number of Transplants | Outcomes

Show 10 entries

Center	Number of transplants performed since 2010	Maximum age among performed transplants since 2010	Maximum BMI among performed transplants since 2010	State	City	Zipcode
39 AdventHealth Orlando	89	65	30.6	FL	Orlando	32803
117 Albany Medical Center Hospital	12	52	28.1	NY	Albany	12208
84 Albert Einstein Medical Center	35	54	39.4	PA	Philadelphia	19141
91 Allegheny General Hospital	32	56	37.3	PA	Pittsburgh	15212
139 Ascension St. John Hospital	3	52	29.5	MI	Detroit	48236-2172
129 Ascension St. Vincent Hospital	6	46	33.5	IN	Indianapolis	46260
85 AU Medical Center, Inc.	34	53	33.4	GA	Augusta	30912-7700
95 Aurora St. Luke's Medical Center	28	59	35	WI	Milwaukee	53215
20 Auxilio Mutuo Hospital	131	60	34.2	PR	Hato Rey	00919-1227
118 Avera McKennan Hospital	12	54	35	SD	Sioux Falls	57105

Note: Counts include transplants performed from Jan 2010 through June 2022

Showing 1 to 10 of 144 entries

Previous 1 2 3 4 5 ... 15 Next



SCIENTIFIC REGISTRY OF
TRANSPLANT RECIPIENTS

Results

Multi-Organ Transplant Analysis Tool

Choose your transplant combination:
Kidney-Pancreas

Choose your age group:
Adult (18+)

Choose your state:
All states

Transplants shown are from 2015 on. Check this box to see transplants from 2010 on, for long-term post-transplant outcomes.

Enter your zip code

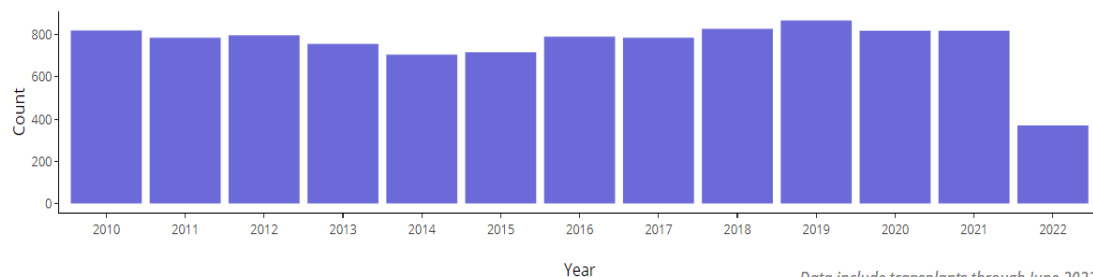
Information for Simultaneous Kidney-Pancreas Transplant

List of Centers

National Number of Transplants

Outcomes

Number of simultaneous kidney-pancreas transplants performed in the U.S. by year



Data include transplants through June 2022



Results

Multi-Organ Transplant Analysis Tool

Choose your transplant combination:
Kidney-Pancreas

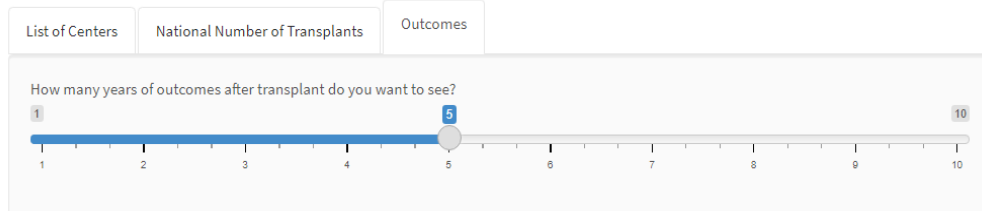
Choose your age group:
Adult (18+)

Choose your state:
All states

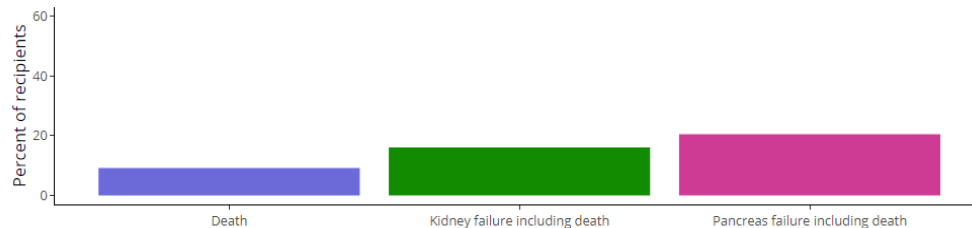
Transplants shown are from 2015 on. Check this box to see transplants from 2010 on, for long-term post-transplant outcomes.

Enter your zip code

Information for Simultaneous Kidney-Pancreas Transplant



5-year simultaneous kidney-pancreas posttransplant graft failure including death and death outcomes



Data include transplants through June 2022



SCIENTIFIC REGISTRY OF
TRANSPLANT RECIPIENTS

Results

What are your likely outcomes after kidney-pancreas transplant?

Choose a transplant program. For a typical center experience, choose 'None':

Choose your age:

Choose your gender:
 Male
 Female

Choose your ethnicity:
 Latino
 Not Latino

How many years have you been on the waiting list?

Are you currently on dialysis?
 Yes
 No

How many years have you been on dialysis?

Have you had a transplant before?
 Yes
 No

Enter your height:
Feet: Inch:

Enter your weight:
Pounds:

I know my antibody level (calculated PRA)

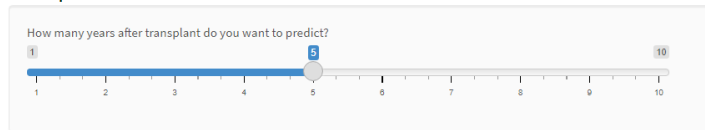
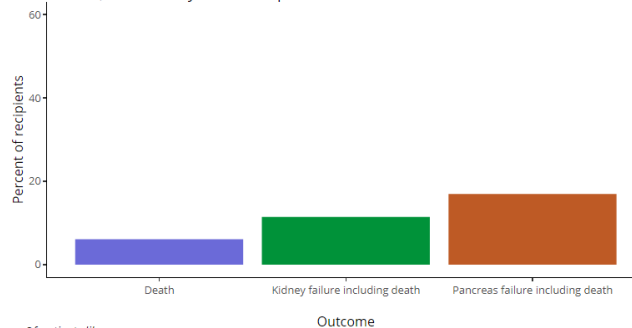


Figure 1: Estimated 5-year posttransplant outcomes of a kidney-pancreas transplant recipient, White / non-Latino, male, on waitlist for 3 years, BMI 23.6, PRA 15, not on dialysis at transplant



Of patients like you

6.1% will die

11.45% will experience kidney graft failure including death

16.93% will experience pancreas graft failure including death

Data include transplants from January 2010 through June 2022



Transplantation

Director	Jon Snyder, PhD, MS	Marketing & Comm. Director	Mona Shater, MA	Biostatisticians	Grace Lyden, PhD
Investigators	Ajay Israni, MD, MS Allyson Hart, MD, MS Cory Schaffhausen, PhD	Marketing & Comm.	Tonya Eberhard Amy Ketterer	(Cont.)	David Schladt, MS Tim Weaver, MS Nicholas Wood, PhD
Program Manager	Caitlyn Nystedt, MPH, PMP	Medical Editor	Anna Gillette	IT Director	Ryan Follmer
Project Managers	Katherine Audette, MS Bryn Thompson, MPH Katie Siegert, MPH	Sr. Administrative Assistant	Pamela Giles	IT, Web, Database, Simulation	Ahmed Habashy, PMP Dan Larson Patrick Johnson Hilford Ponnice Joshua Pyke, PhD C. Daniel Sheets Eugene Shteyn, MS
Project Coordinator	Courtney Williams	Sr. Manager, Biostatistics	David Zaun, MS		
		Biostatisticians	Yoon Son Ahn, MS Jon Miller, PhD, MPH		





SCIENTIFIC
REGISTRY OF
TRANSPLANT
RECIPIENTS

Contact us: SRTR@SRTR.org

Follow us:



[@SRTRNews](https://twitter.com/SRTRNews)



[Scientific Registry of Transplant Recipients](https://www.linkedin.com/company/scientific-registry-of-transplant-recipients)



[SRTR](https://www.youtube.com/SRTR)